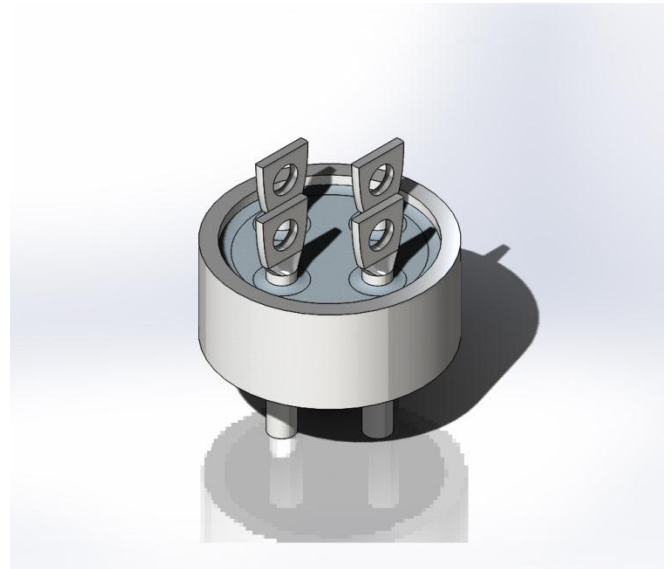
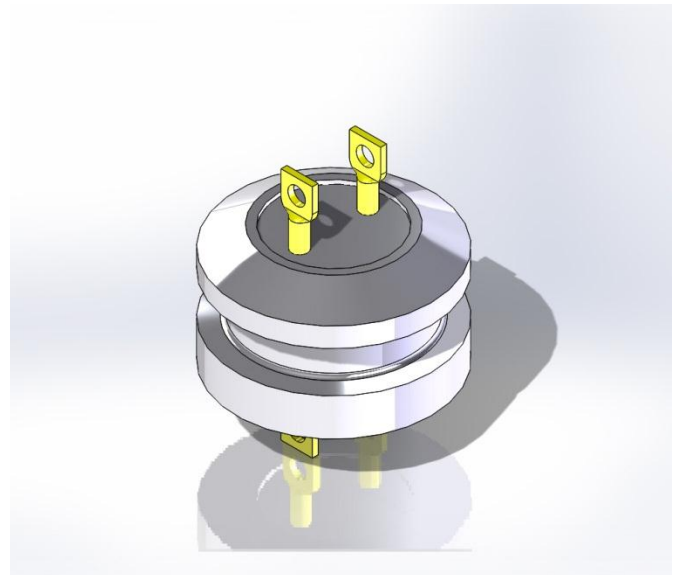


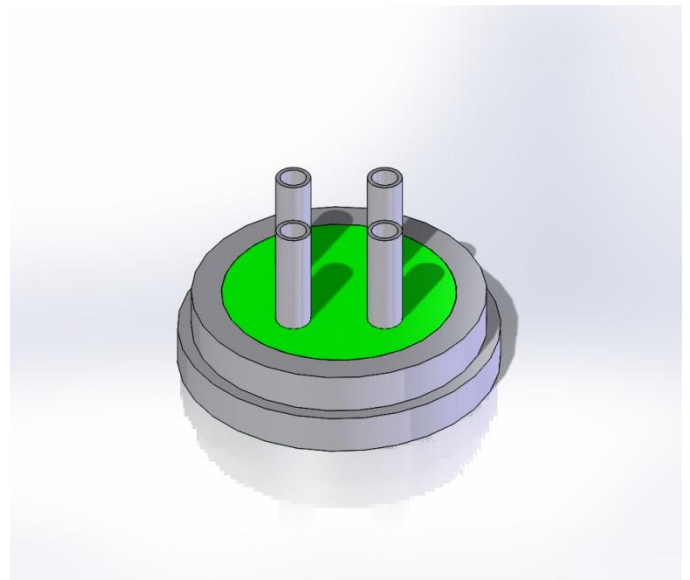
PART NO.: 0100-XXXX
GSP SERIES NO.: ROUND HEADER
GENERAL DESCRIPTION: ALL GLASS



PART NO.: 0101-XXXX
GSP SERIES NO.: HAG SERIES HEADER
GENERAL DESCRIPTION: ALL GLASS



PART NO.: 0102-XXXX
GSP SERIES NO.: HAGF SERIES HEADER
GENERAL DESCRIPTION: ALL GLASS FLANGED



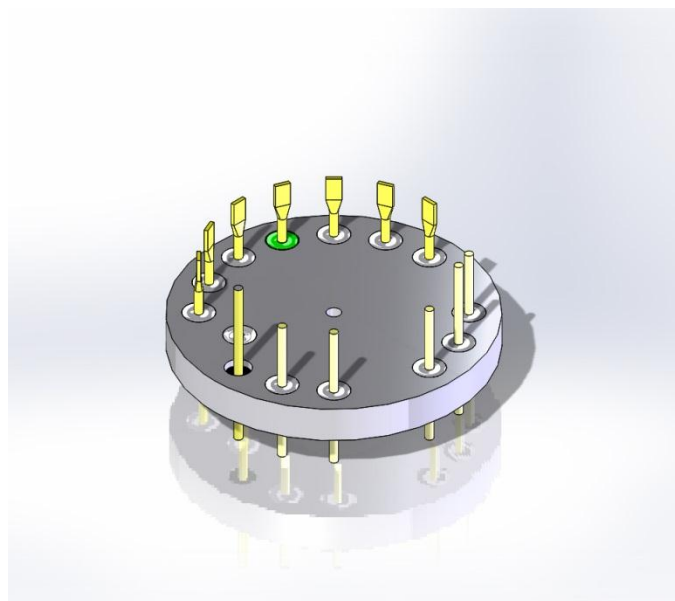
PART NO.: 0103-XXXX
GSP SERIES NO.: HAGRF SERIES HEADER
GENERAL DESCRIPTION: ALL GLASS REVERSED FLANGED



PART NO.: 0104-XXXX
GSP SERIES NO.: HAGS SERIES HEADER
GENERAL DESCRIPTION: ALL GLASS SKIRTED



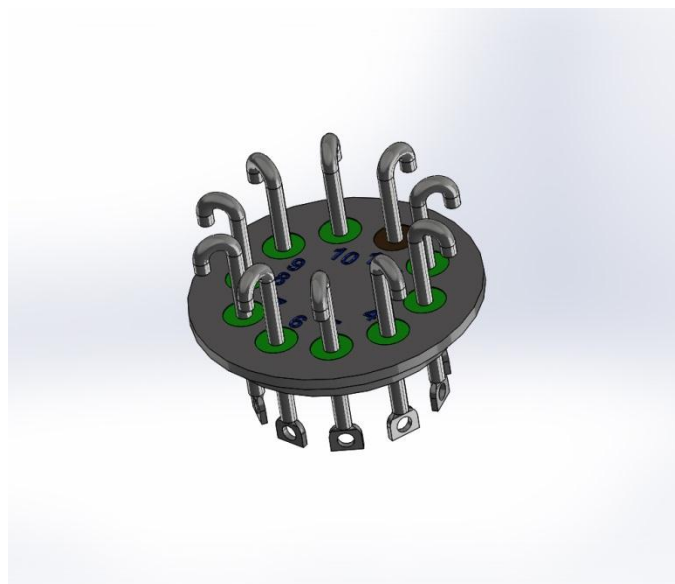
PART NO.: 0150-XXXX
GSP SERIES NO.: ROUND HEADER
GENERAL DESCRIPTION: INDIVIDUAL GLASS



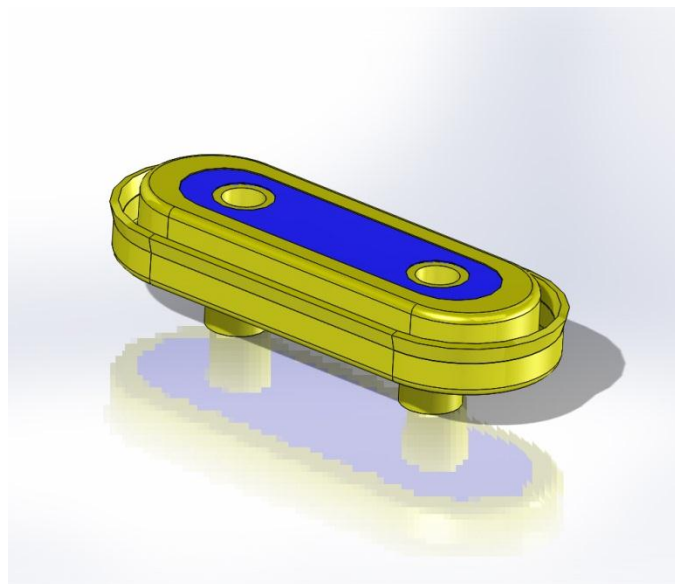
PART NO.: 0151-XXXX
GSP SERIES NO.: HIGF SERIES HEADER
GENERAL DESCRIPTION: INDIVIDUAL GLASS FLANGED



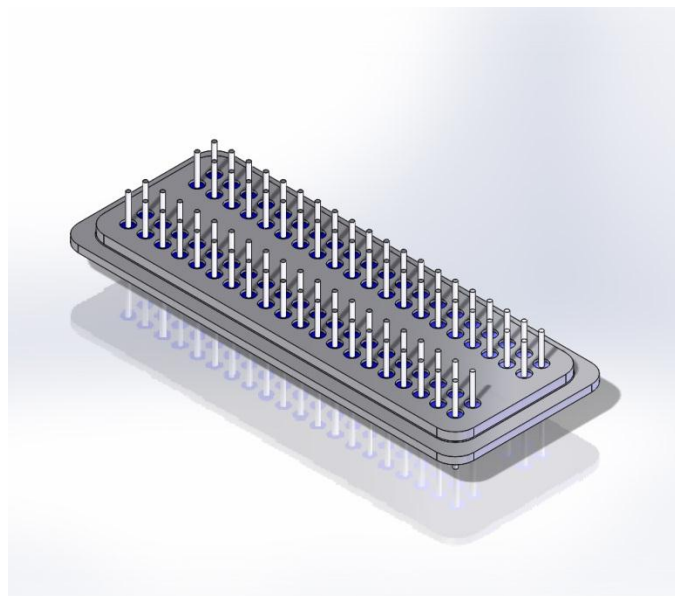
PART NO.: 0152-XXXX
GSP SERIES NO.: HIGRF SERIES HEADER
GENERAL DESCRIPTION: INDIVIDUAL GLASS REVERSED
FLANGED



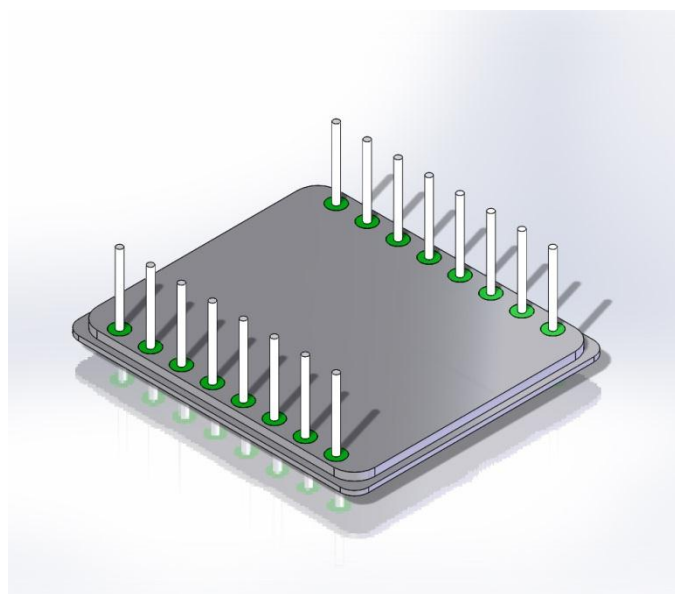
PART NO.: 0200-XXXX
GSP SERIES NO.: RECTANGULAR HEADER
GENERAL DESCRIPTION: ALL GLASS



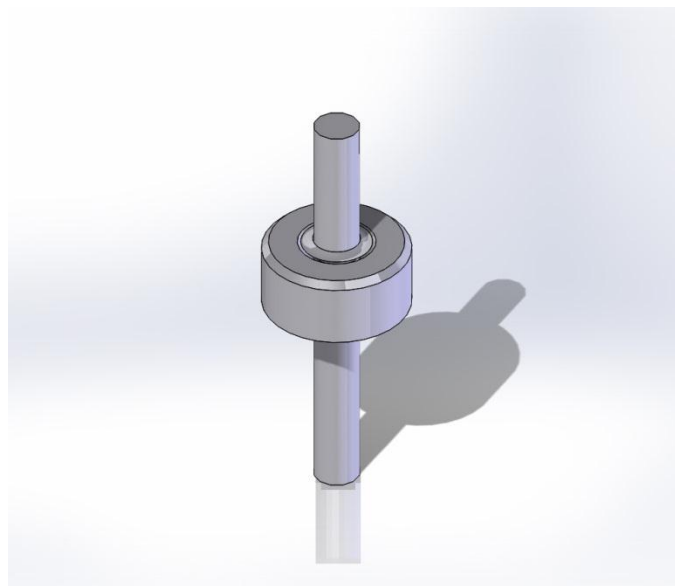
PART NO.: 0250-XXXX
GSP SERIES NO.: RECTANGULAR HEADER
GENERAL DESCRIPTION: INDIVIDUAL GLASS



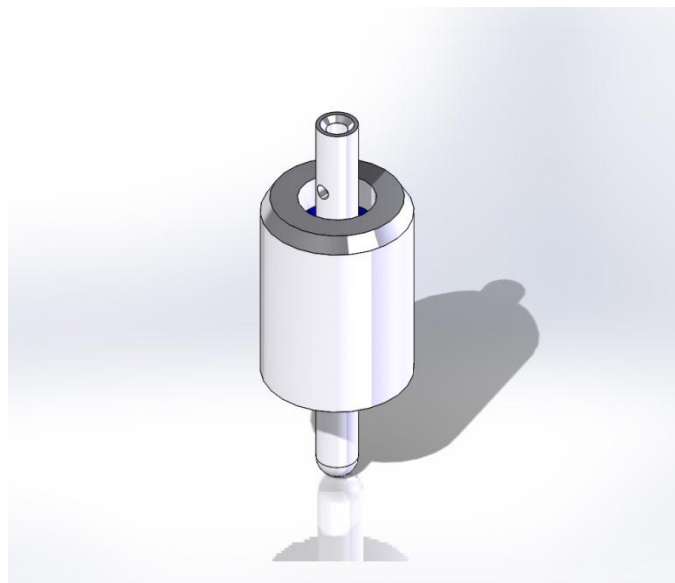
PART NO.: 0251-XXXX
GSP SERIES NO.: MP SERIES
GENERAL DESCRIPTION: METAL PLATFORMS



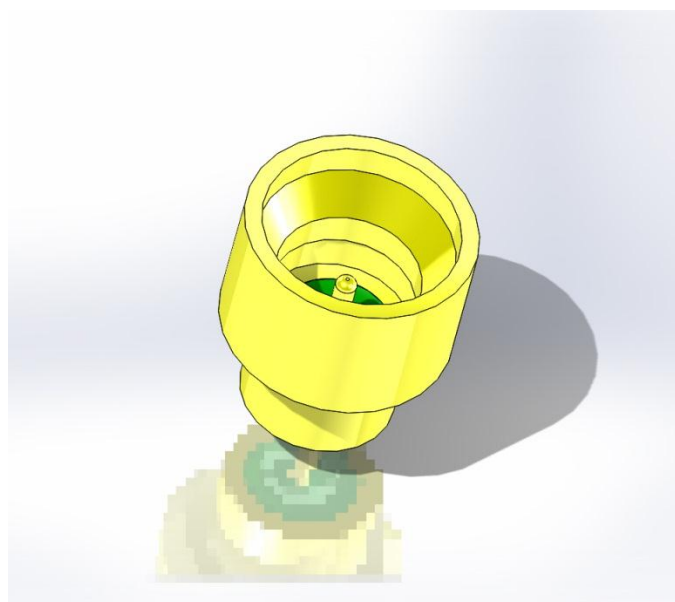
PART NO.: 0300-XXXX
GSP SERIES NO.: TERMINAL
GENERAL DESCRIPTION: NO FLANGE, COMPRESSION SEAL



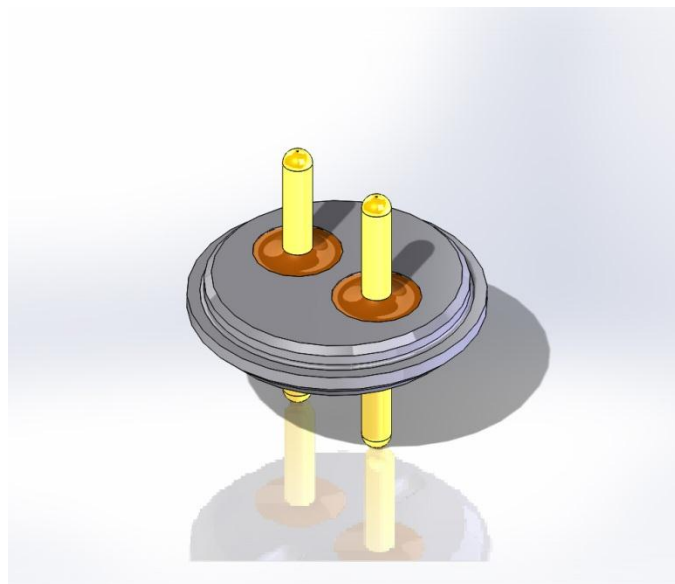
PART NO.: 0301-XXXX
GSP SERIES NO.: T-SERIES TERMINAL
GENERAL DESCRIPTION: NO FLANGE, COMPRESSION SEAL



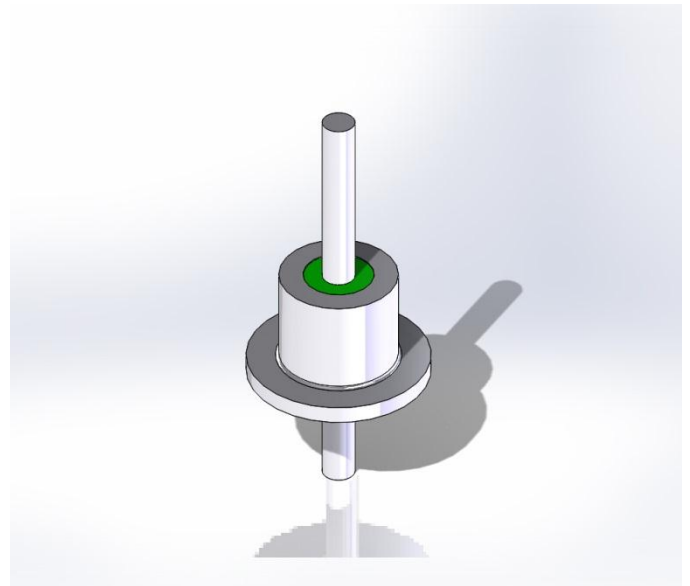
PART NO.: 0350-XXXX
GSP SERIES NO.: TERMINAL
GENERAL DESCRIPTION: NO FLANGE, MATCHED SEAL



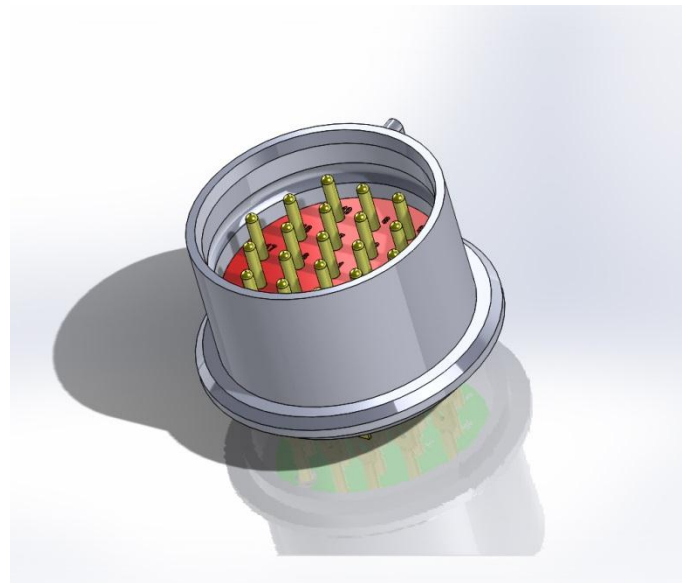
PART NO.: 0400-XXXX
GSP SERIES NO.: TERMINAL
GENERAL DESCRIPTION: WITH FLANGE, COMPRESSION SEAL



PART NO.: 0401-XXXX
GSP SERIES NO.: TF SERIES TERMINAL
GENERAL DESCRIPTION: WITH FLANGE, COMPRESSION SEAL



PART NO.: 0402-XXXX
GSP SERIES NO.: 402 SERIES CONNECTOR
GENERAL DESCRIPTION: MIL-C-81703 & MS-3134



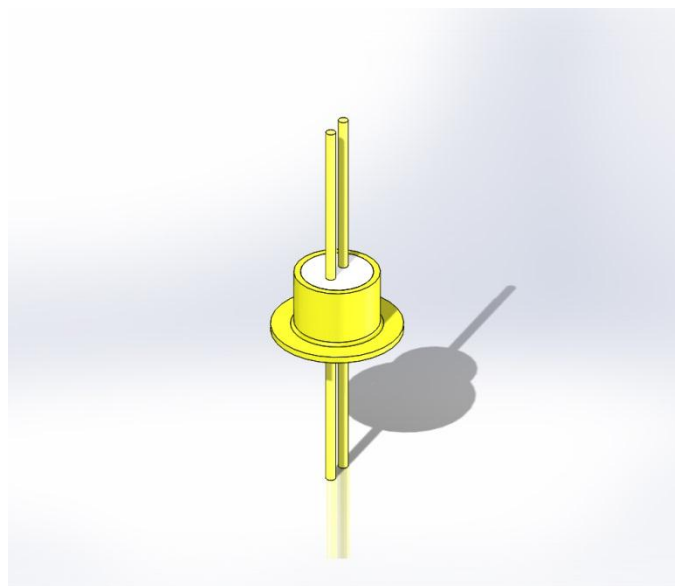
PART NO.: 0420-XXXX
GSP SERIES NO.: BATTERY SEALS
GENERAL DESCRIPTION:



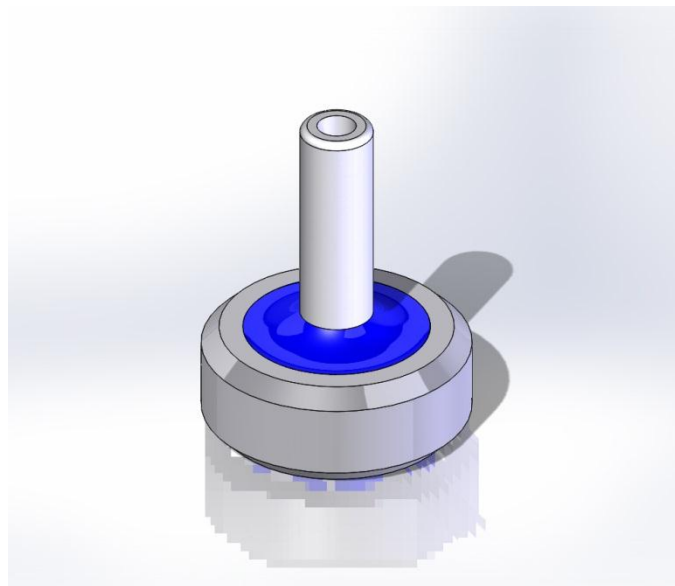
PART NO.: 0450-XXXX
GSP SERIES NO.: TERMINAL
GENERAL DESCRIPTION: WITH FLANGE, MATCHED SEAL



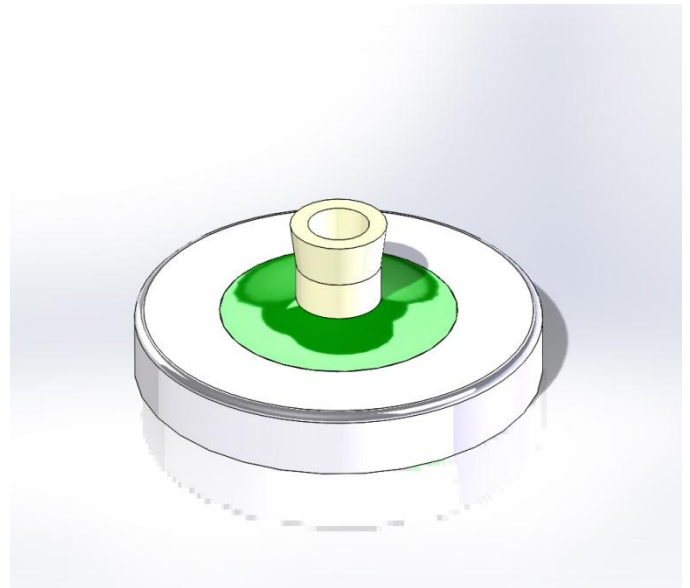
PART NO.: 0451-XXXX
GSP SERIES NO.: TFK SERIES TERMINAL
GENERAL DESCRIPTION: WITH FLANGE, KOVAR MATERIAL



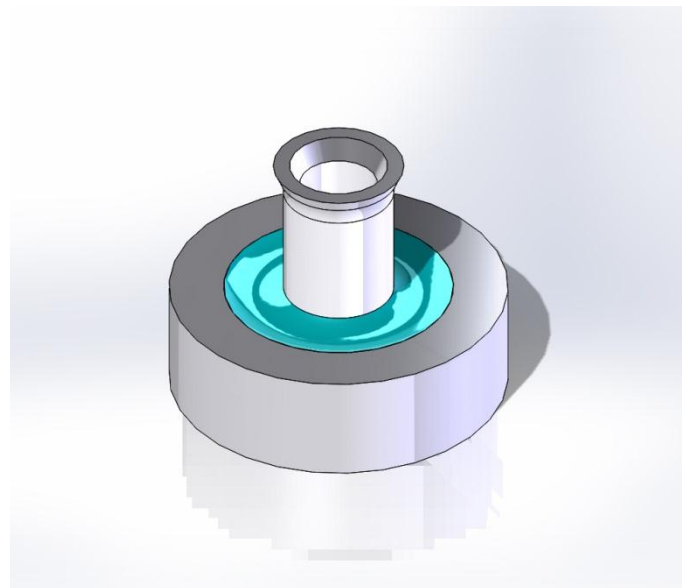
PART NO.: 0500-XXXX
GSP SERIES NO.: ENDSEAL
GENERAL DESCRIPTION:



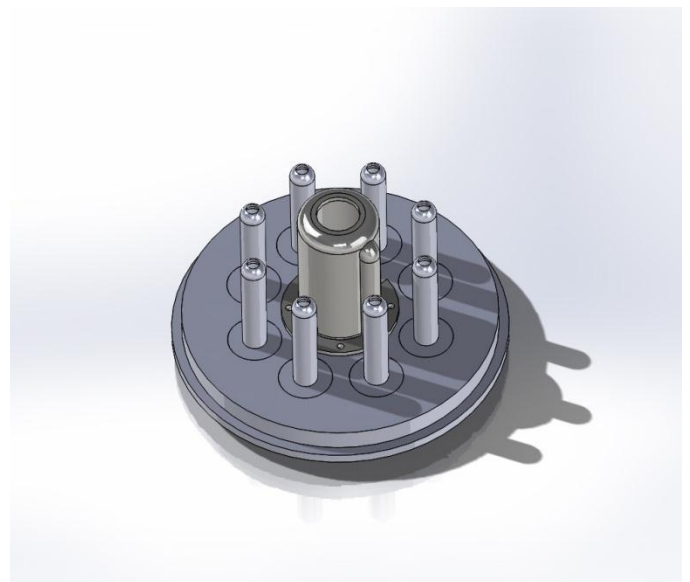
PART NO.: 0502-XXXX
GSP SERIES NO.: CES SERIES ENDSEAL
GENERAL DESCRIPTION: CUP BODY



PART NO.: 0503-XXXX
GSP SERIES NO.: ES SERIES ENDSEAL
GENERAL DESCRIPTION: STRAIGHT BODY



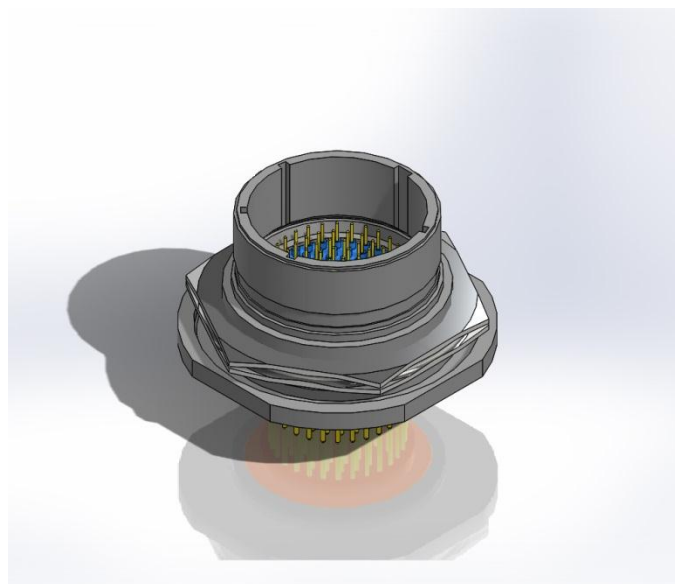
PART NO.: 0601-XXXX
GSP SERIES NO.: O SERIES
GENERAL DESCRIPTION: OCTAL PLUGS



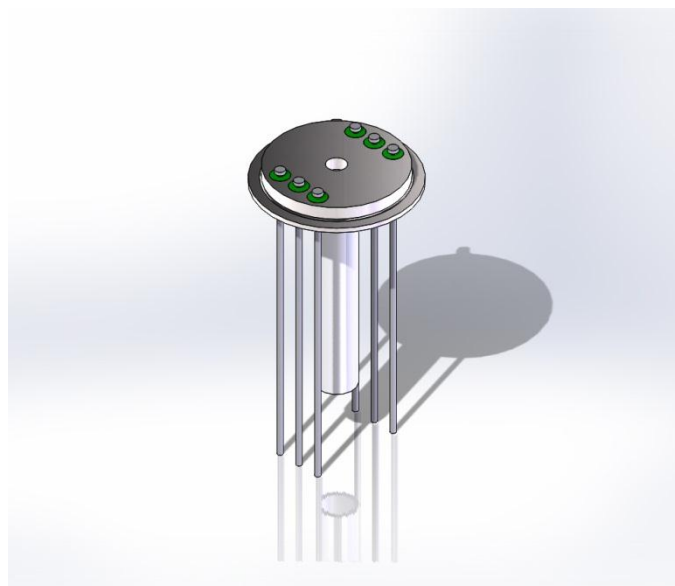
PART NO.: 0621-XXXX
GSP SERIES NO.: 621 SERIES
GENERAL DESCRIPTION: MIL-C-38999 SERIES 3 & D38999/21



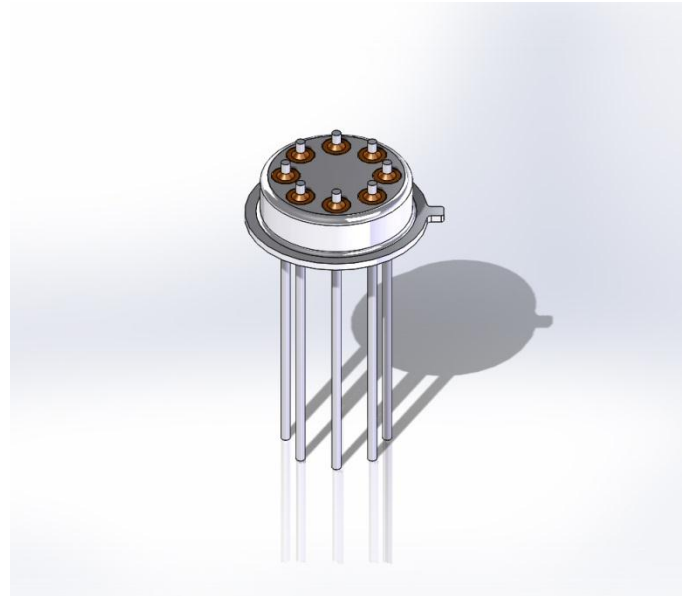
PART NO.: 0623-XXXX
GSP SERIES NO.: 623 SERIES
GENERAL DESCRIPTION: MIL-C-38999 SERIES 3 & D38999/23



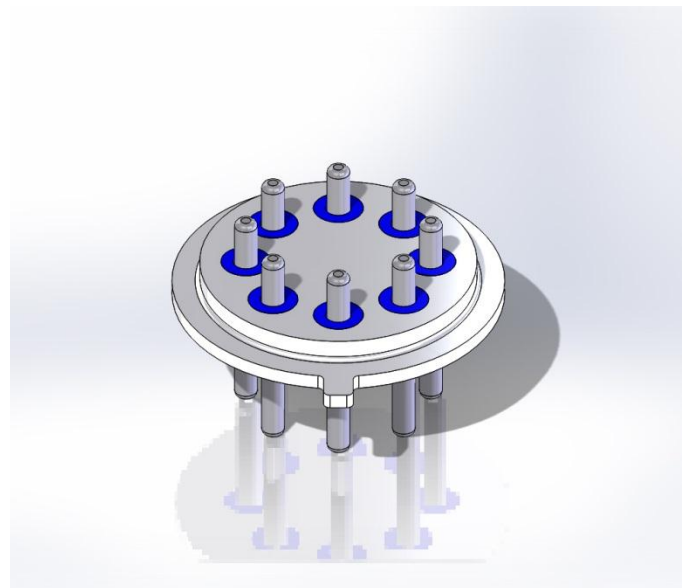
PART NO.: 0650-01XX
GSP SERIES NO.: TRANSISTOR OUTLINES
GENERAL DESCRIPTION: SM SERIES – KOVAR BODIES



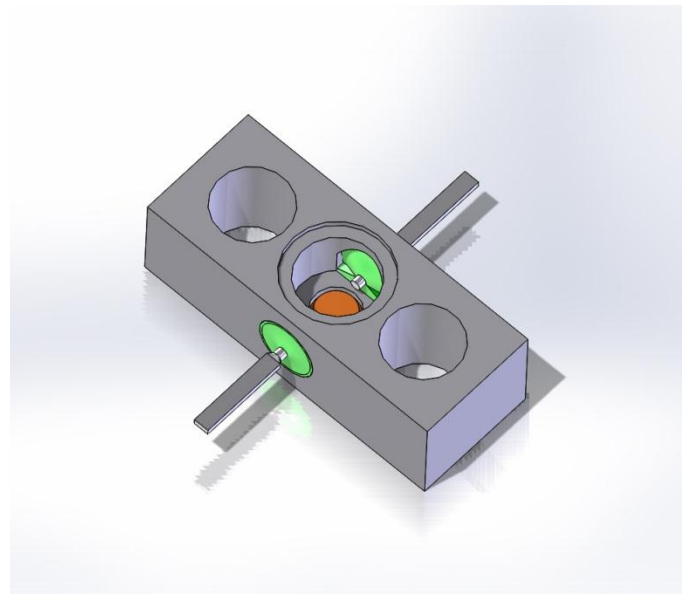
PART NO.: 0650-1XXX
GSP SERIES NO.: TRANSISTOR OUTLINES
GENERAL DESCRIPTION: GF SERIES – GLASS FILLED



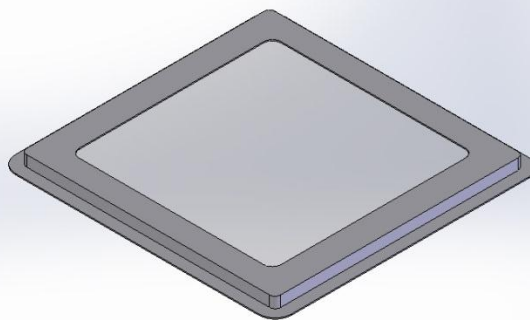
PART NO.: 0650-2XXX
GSP SERIES NO.: TRANSISTOR OUTLINES
GENERAL DESCRIPTION: SC SERIES – CRS BODIES



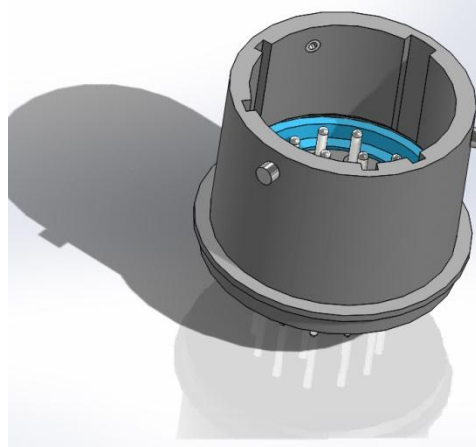
PART NO.: 0660-XXXX
GSP SERIES NO.: DROP-IN'S
GENERAL DESCRIPTION:



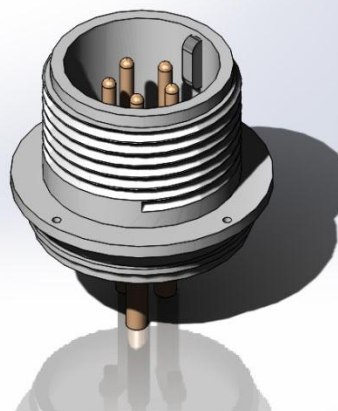
PART NO.: 0700-XXXX
GSP SERIES NO.: WINDOWS
GENERAL DESCRIPTION:



PART NO.: 0702-XXXX
GSP SERIES NO.: 702 SERIES CONNECTORS
GENERAL DESCRIPTION: MIL-C-38999 SERIES 1 & MS-27471



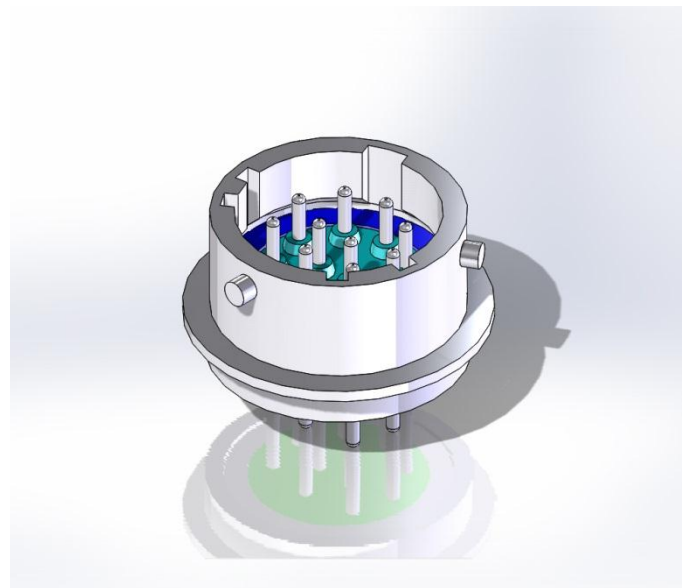
PART NO.: 0750-XXXX
GSP SERIES NO.: SPECIAL CONNECTORS
GENERAL DESCRIPTION:



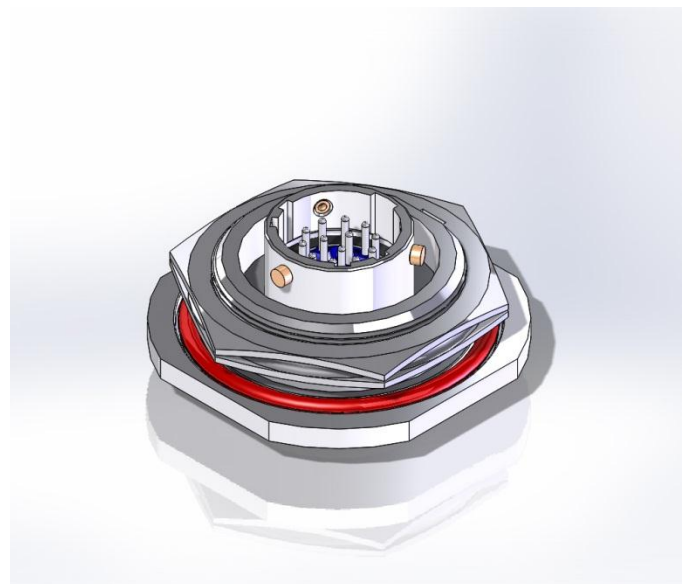
PART NO.: 0800-XXXX
GSP SERIES NO.: AUTO – SQUIBS, SQUIBS
GENERAL DESCRIPTION: NCS



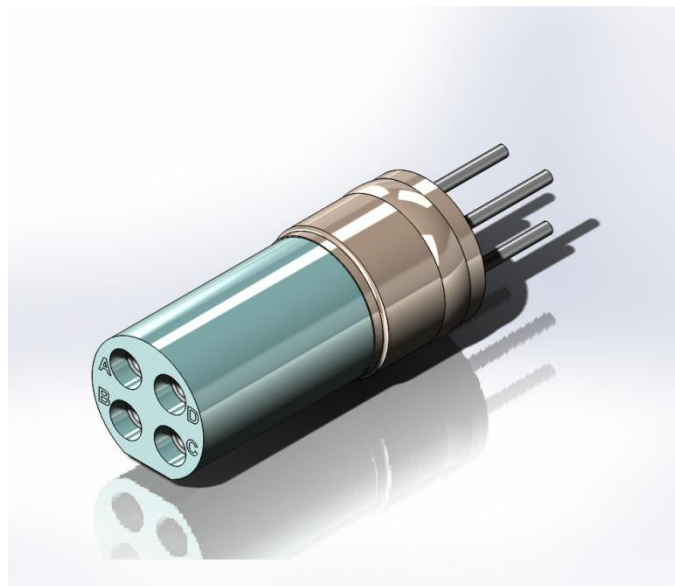
PART NO.: 0802-XXXX
GSP SERIES NO.: 802 SERIES CONNECTORS
GENERAL DESCRIPTION: MIL-C-38999 SERIES 2 & MS-27478



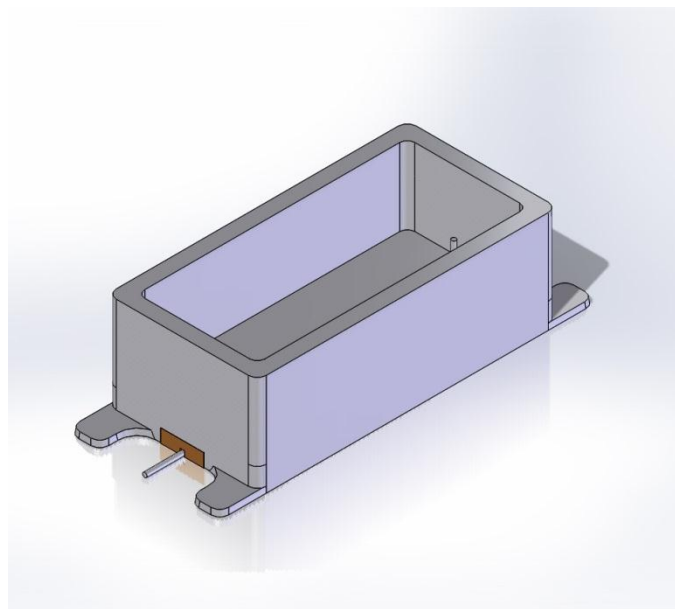
PART NO.: 0805-XXXX
GSP SERIES NO.: 805 SERIES CONNECTORS
GENERAL DESCRIPTION: MIL-C-38999 SERIES 2 & MS-27477



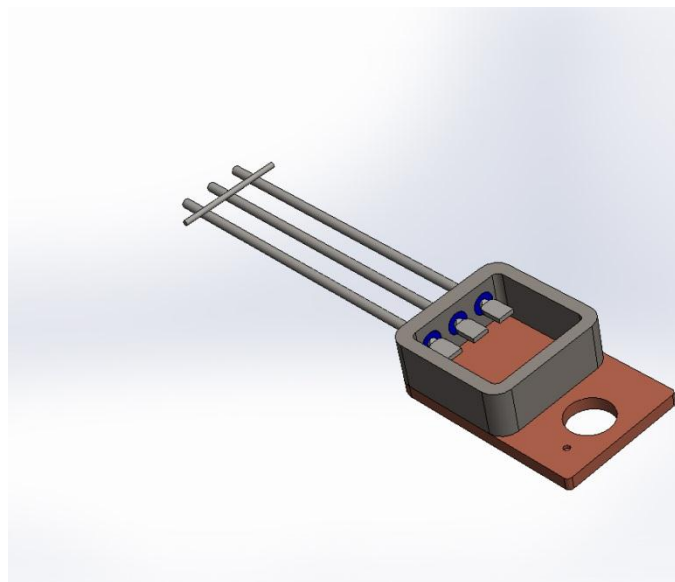
PART NO.: 1000-XXXX
GSP SERIES NO.: SPECIAL SEALS
GENERAL DESCRIPTION:



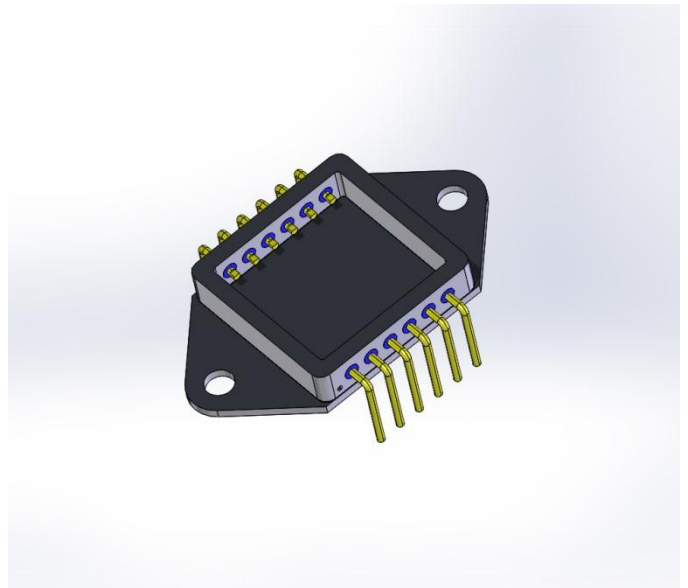
PART NO.: 1102-XXXX
GSP SERIES NO.: UP SERIES
GENERAL DESCRIPTION: UNIBODY PLUG-IN



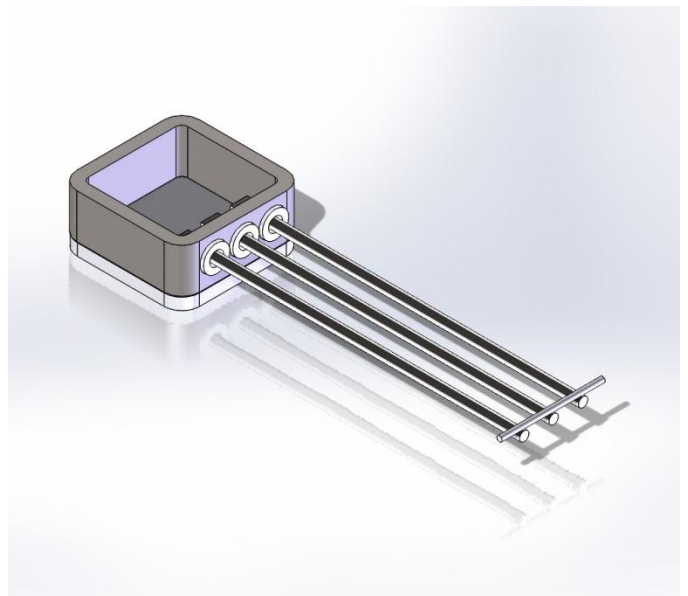
PART NO.: 1400-XXXX
GSP SERIES NO.: FLAT PACKS
GENERAL DESCRIPTION:



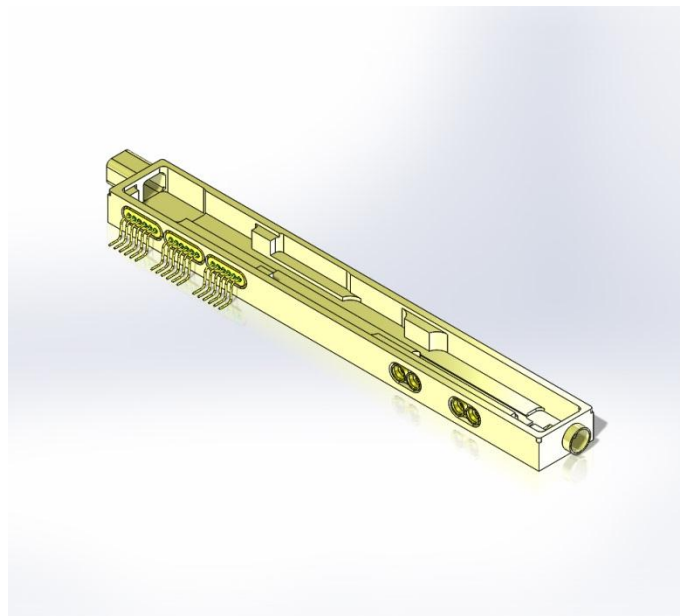
PART NO.: 1401-XXXX
GSP SERIES NO.: UF SERIES
GENERAL DESCRIPTION: UNIBODY FLAT PACK



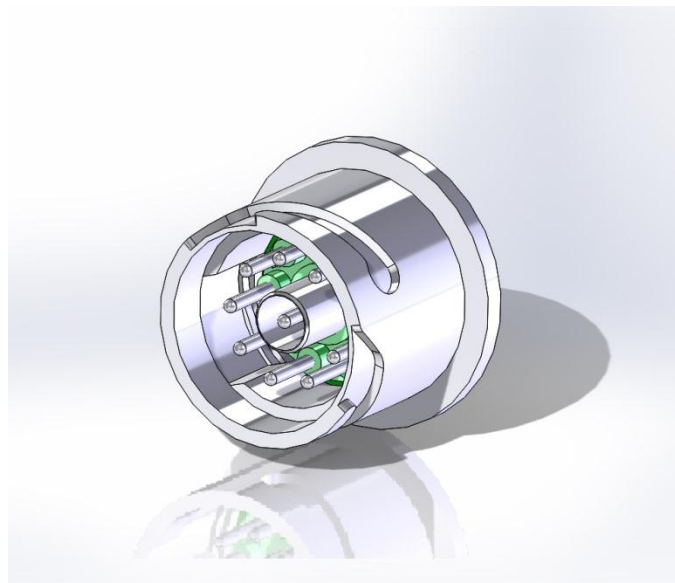
PART NO.: 1402-XXXX
GSP SERIES NO.: POWER PACKAGES
GENERAL DESCRIPTION: TO-254, TO-257, TO-259



PART NO.: 1500-XXXX
GSP SERIES NO.: HYBRID PACKAGES
GENERAL DESCRIPTION: MACHINED HYBRIDS



PART NO.: 1800-XXXX
GSP SERIES NO.: 1800 SERIES CONNECTORS
GENERAL DESCRIPTION: AMPH'S 1800 SERIES, NORMAL
POSITION



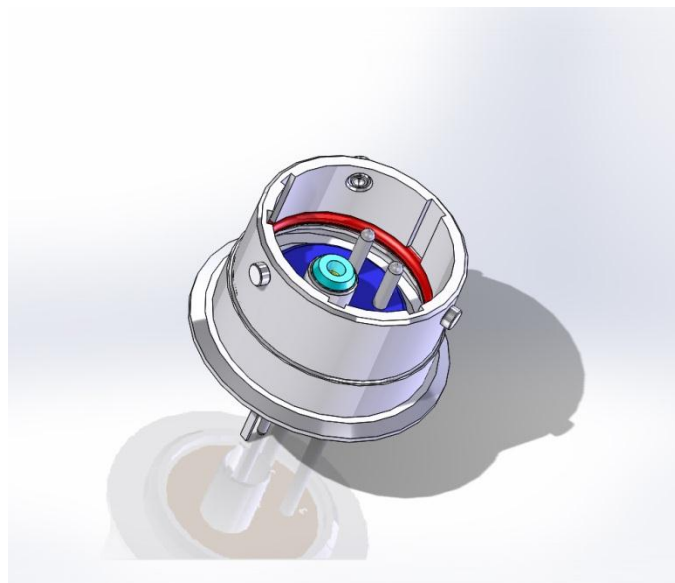
PART NO.: 1810-XXXX
GSP SERIES NO.: 1800 SERIES CONNECTORS
GENERAL DESCRIPTION: AMPH'S 1800 SERIES, "W" POSITION



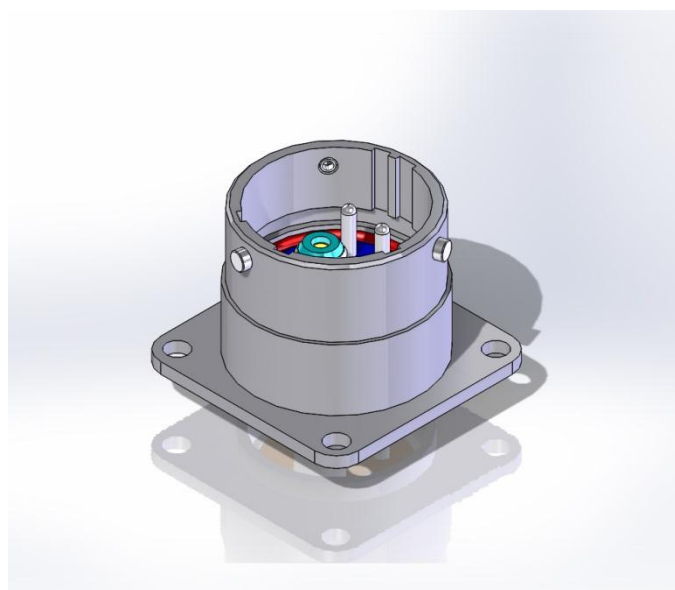
PART NO.: 1820-XXXX
GSP SERIES NO.: 1800 SERIES CONNECTORS
GENERAL DESCRIPTION: AMPH'S 1800 SERIES, "X" POSITION



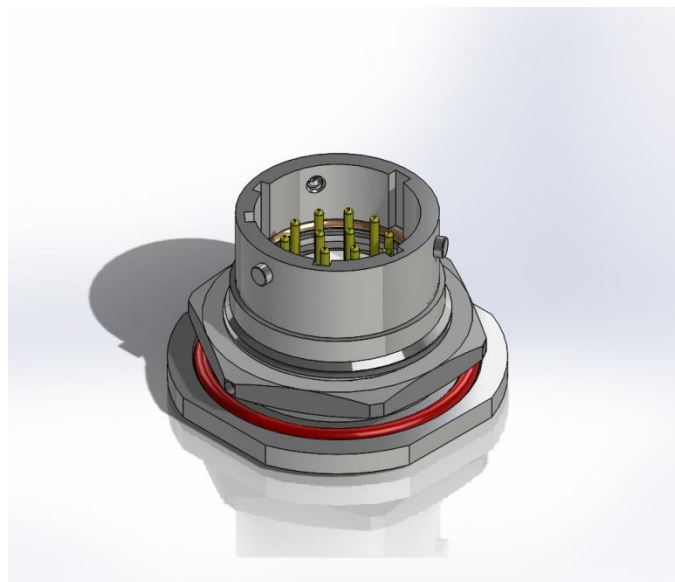
PART NO.: 2000-XXXX
GSP SERIES NO.: 501 SERIES CONNECTORS
GENERAL DESCRIPTION: MIL-C-26500, MS-27034, BAYONET
COUPLING



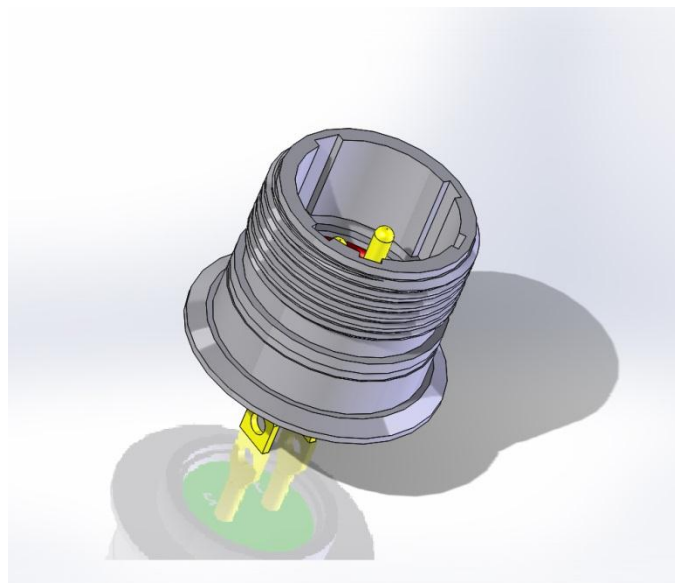
PART NO.: 2100-XXXX
GSP SERIES NO.: 502 SERIES CONNECTORS
GENERAL DESCRIPTION: MIL-C-26500, MS-24264, BAYONET
COUPLING



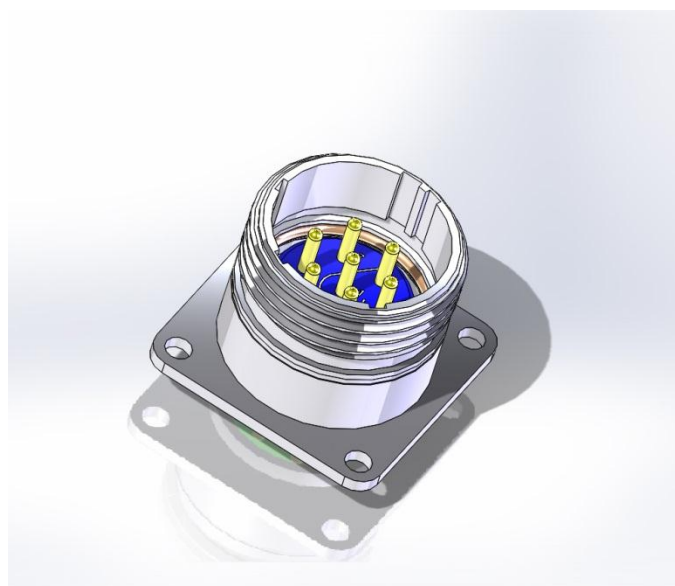
PART NO.: 2200-XXXX
GSP SERIES NO.: 507 SERIES CONNECTORS
GENERAL DESCRIPTION: MIL-C-26500, MS-24265, BAYONET
COUPLING



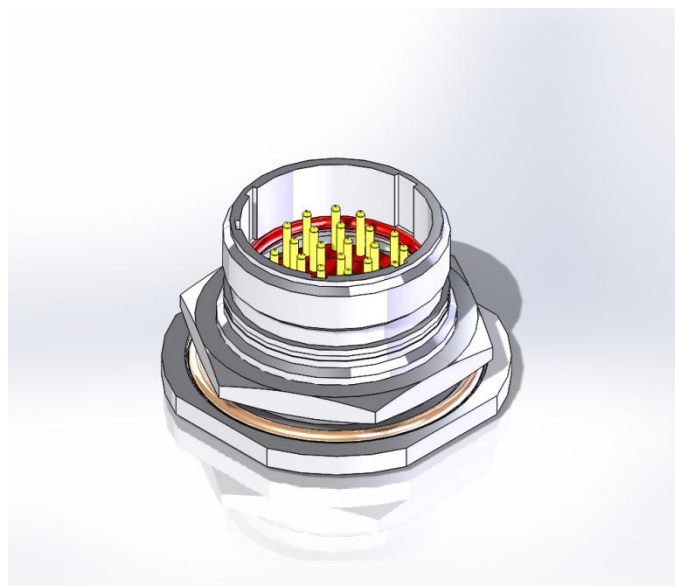
PART NO.: 2300-XXXX
GSP SERIES NO.: 501 SERIES CONNECTORS
GENERAL DESCRIPTION: MIL-C-26500, MS-27034, THREAD
COUPLING



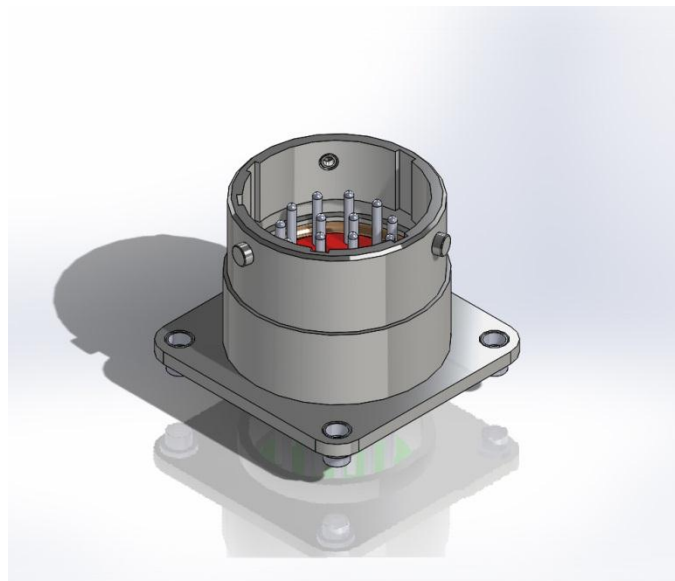
PART NO.: 2400-XXXX
GSP SERIES NO.: 502 SERIES CONNECTORS
GENERAL DESCRIPTION: MIL-C-26500, MS-24264, THREAD
COUPLING



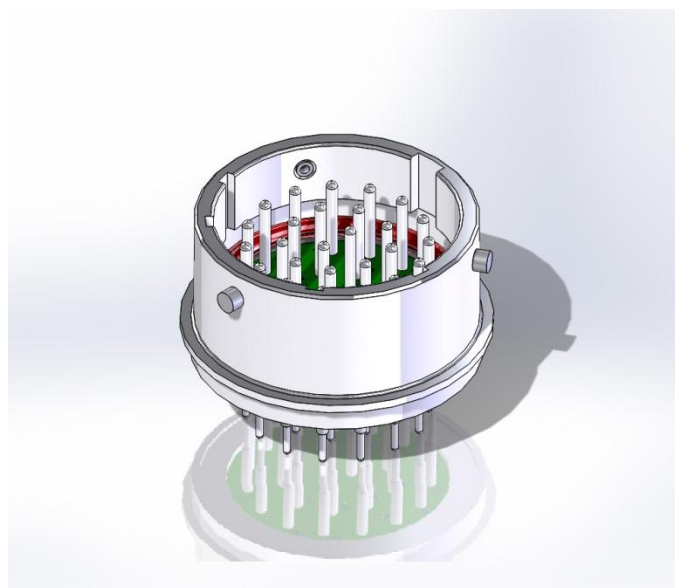
PART NO.: 2500-XXXX
GSP SERIES NO.: 507 SERIES CONNECTORS
GENERAL DESCRIPTION: MIL-C-26500, MS-24265, THREAD
COUPLING



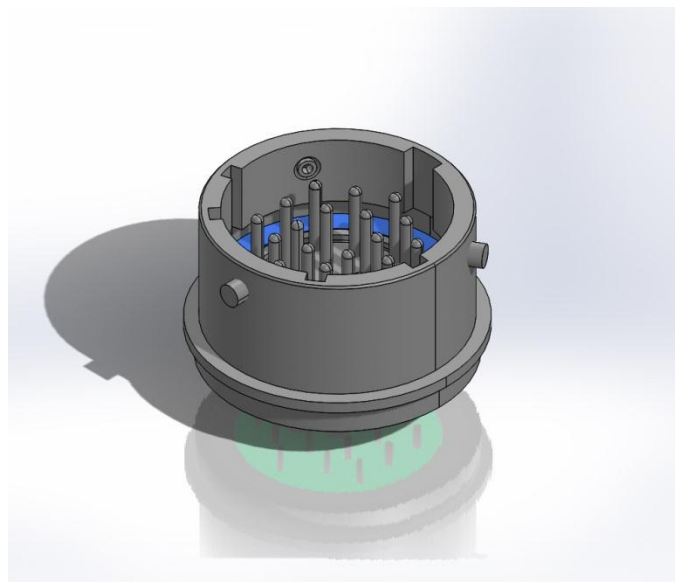
PART NO.: 2800-XXXX
GSP SERIES NO.: 402 SERIES CONNECTORS
GENERAL DESCRIPTION: HONEYWELL'S 4001321



PART NO.: 3000-XXXX
GSP SERIES NO.: BEI SERIES CONNECTORS
GENERAL DESCRIPTION: MIL-C-26482 SERIES 1 & MS-3113,
NO FACE SEAL, NORMAL POSITION



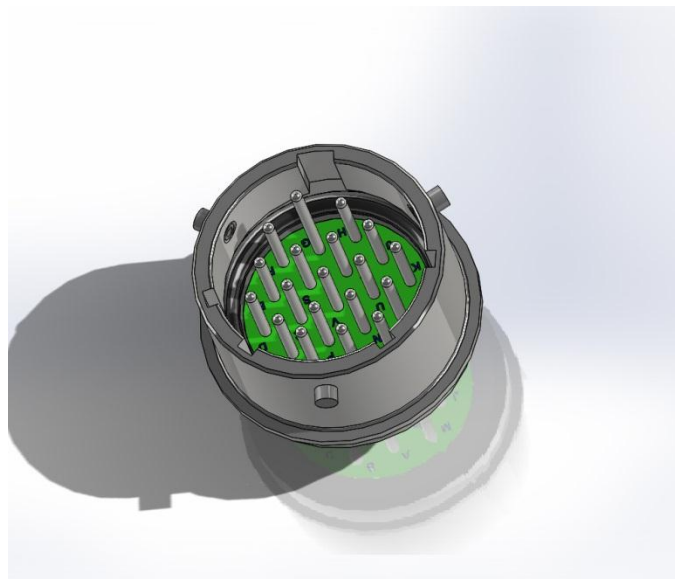
PART NO.: 3010-XXXX
GSP SERIES NO.: BEI SERIES CONNECTORS
GENERAL DESCRIPTION: MIL-C-26482 SERIES 1 & MS-3113,
NO FACE SEAL, W POSITION



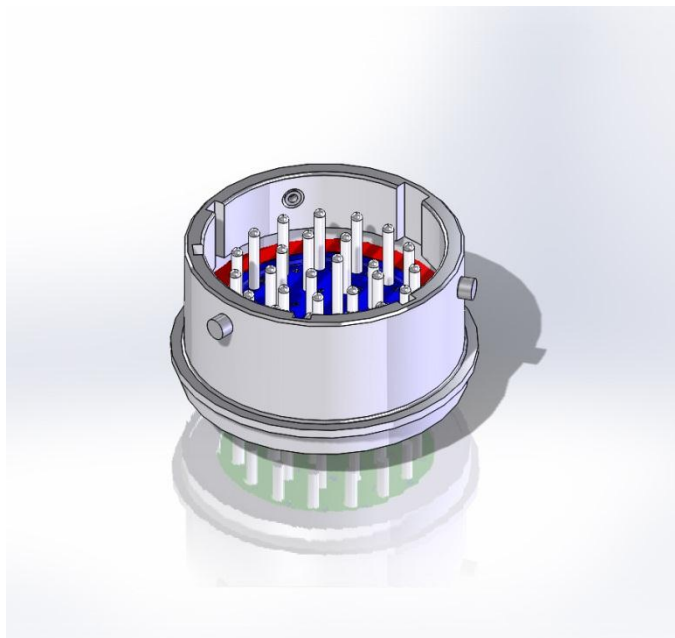
PART NO.: 3020-XXXX
GSP SERIES NO.: BEI SERIES CONNECTORS
GENERAL DESCRIPTION: MIL-C-26482 SERIES 1 & MS-3113,
NO FACE SEAL, W POSITION

PART NO.: 3030-XXXX
GSP SERIES NO.: BEI SERIES CONNECTORS
GENERAL DESCRIPTION: MIL-C-26482 SERIES 1 & MS-3113,
NO FACE SEAL, X POSITION

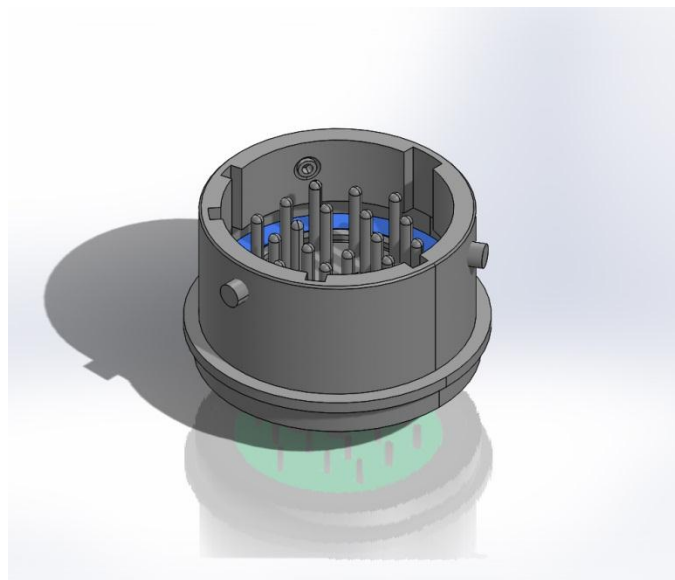
PART NO.: 3040-XXXX
GSP SERIES NO.: BEI SERIES CONNECTORS
GENERAL DESCRIPTION: MIL-C-26482 SERIES 1 & MS-3113,
NO FACE SEAL, Z POSITION



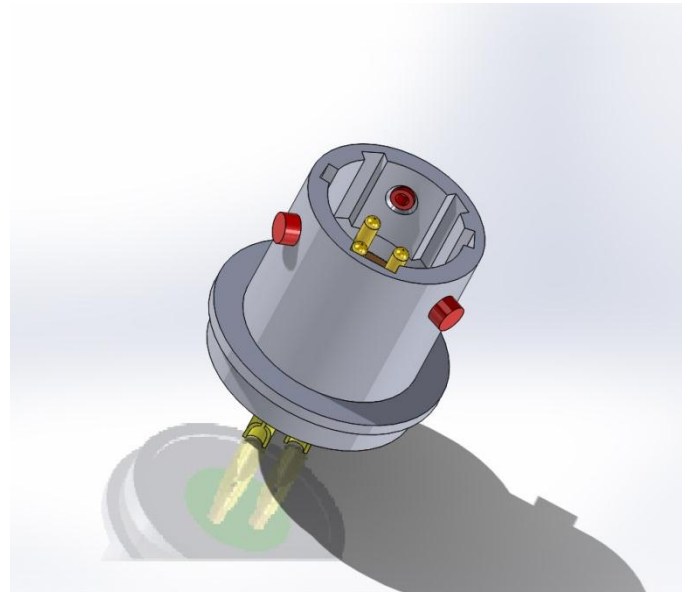
PART NO.: 3001-XXXX
GSP SERIES NO.: GBI SERIES CONNECTORS
GENERAL DESCRIPTION: MIL-C-26482 SERIES 1 & MS-3113,
NORMAL POSITION



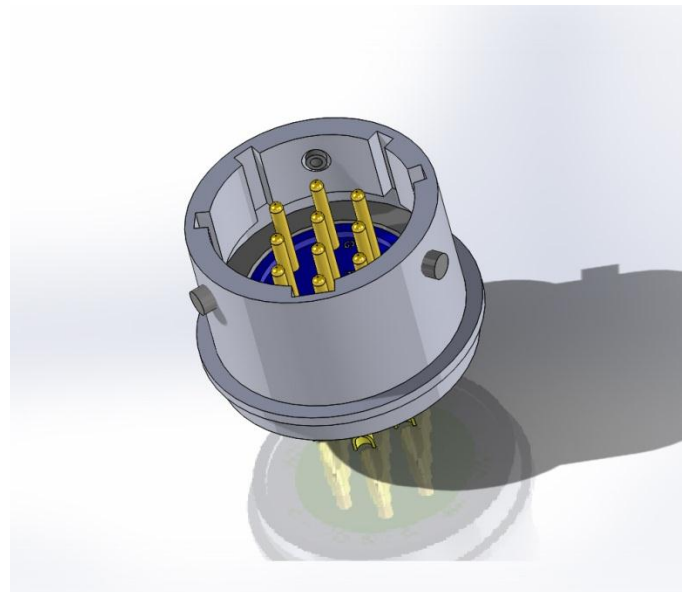
PART NO.: 3011-XXXX
GSP SERIES NO.: GBI SERIES CONNECTORS
GENERAL DESCRIPTION: MIL-C-26482 SERIES 1 & MS-3113,
W POSITION



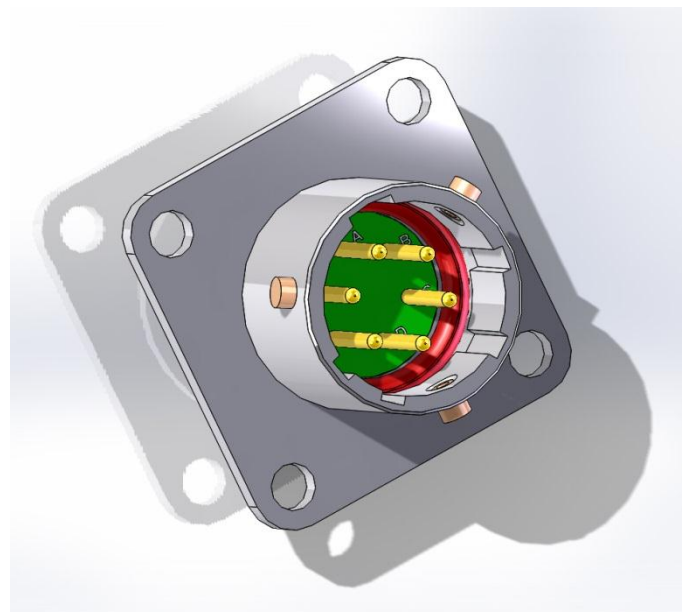
PART NO.: 3021-XXXX
GSP SERIES NO.: GBI SERIES CONNECTORS
GENERAL DESCRIPTION: MIL-C-26482 SERIES 1 & MS-3113,
X POSITION



PART NO.: 3031-XXXX
GSP SERIES NO.: GBI SERIES CONNECTORS
GENERAL DESCRIPTION: MIL-C-26482 SERIES 1 & MS-3113,
Y POSITION (SHOWN)



PART NO.: 3041-XXXX
GSP SERIES NO.: GBI SERIES CONNECTORS
GENERAL DESCRIPTION: MIL-C-26482 SERIES 1 & MS-3113,
Z POSITION



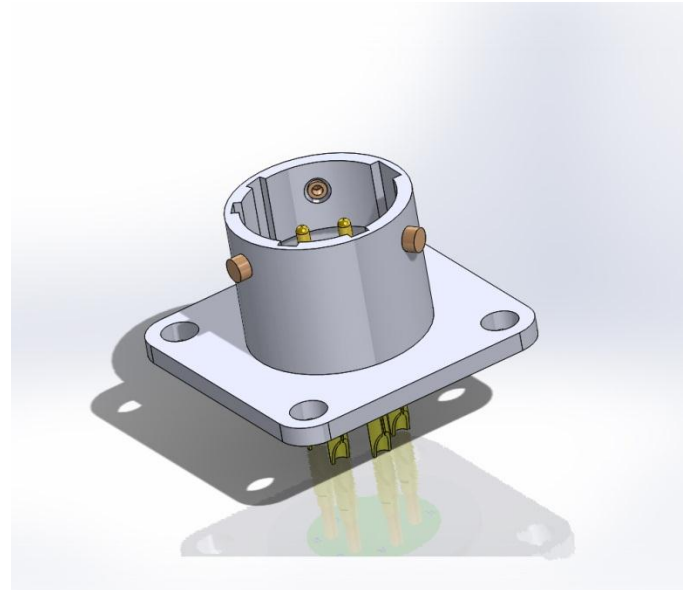
PART NO.: 3100-XXXX
GSP SERIES NO.: BE2 SERIES CONNECTORS
GENERAL DESCRIPTION: MIL-C-26482 SERIES 1 & BOX
MOUNT, NO FACE SEAL, NORMAL POSITION

PART NO.: 3110-XXXX
GSP SERIES NO.: BE2 SERIES CONNECTORS
GENERAL DESCRIPTION: MIL-C-26482 SERIES 1 & BOX
MOUNT, NO FACE SEAL, W POSITION

PART NO.: 3120-XXXX
GSP SERIES NO.: BE2 SERIES CONNECTORS
GENERAL DESCRIPTION: MIL-C-26482 SERIES 1 & BOX
MOUNT, NO FACE SEAL, X POSITION

PART NO.: 3130-XXXX
GSP SERIES NO.: BE2 SERIES CONNECTORS
GENERAL DESCRIPTION: MIL-C-26482 SERIES 1 & BOX
MOUNT, NO FACE SEAL, Y POSITION

PART NO.: 3140-XXXX
GSP SERIES NO.: BE2 SERIES CONNECTORS
GENERAL DESCRIPTION: MIL-C-26482 SERIES 1 & BOX
MOUNT, NO FACE SEAL, Z POSITION



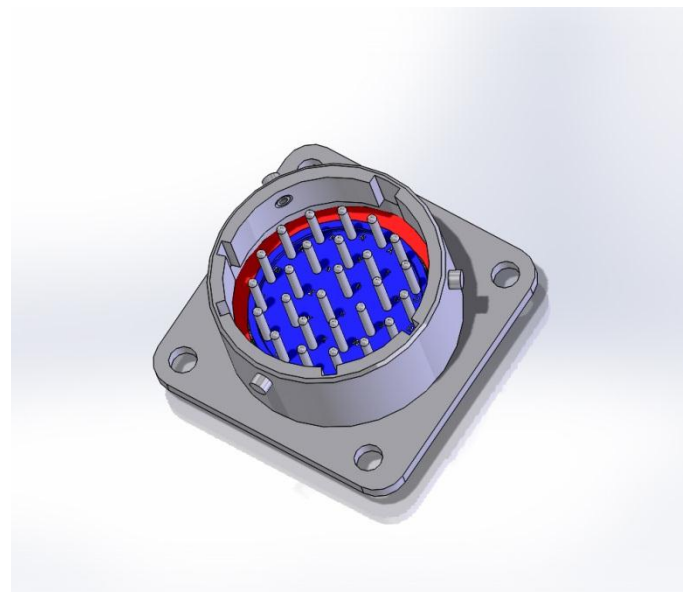
PART NO.: 3101-XXXX
GSP SERIES NO.: GB2 SERIES CONNECTORS
GENERAL DESCRIPTION: MIL-C-26482 SERIES 1 & BOX
MOUNT, NORMAL POSITION

PART NO.: 3111-XXXX
GSP SERIES NO.: GB2 SERIES CONNECTORS
GENERAL DESCRIPTION: MIL-C-26482 SERIES 1 & BOX
MOUNT, W POSITION

PART NO.: 3121-XXXX
GSP SERIES NO.: GB2 SERIES CONNECTORS
GENERAL DESCRIPTION: MIL-C-26482 SERIES 1 & BOX
MOUNT, X POSITION

PART NO.: 3131-XXXX
GSP SERIES NO.: GB2 SERIES CONNECTORS
GENERAL DESCRIPTION: MIL-C-26482 SERIES 1 & BOX
MOUNT, Y POSITION

PART NO.: 3141-XXXX
GSP SERIES NO.: GB2 SERIES CONNECTORS
GENERAL DESCRIPTION: MIL-C-26482 SERIES 1 & BOX
MOUNT, Z POSITION



PART NO.: 3200-XXXX
GSP SERIES NO.: BE7 SERIES CONNECTORS
GENERAL DESCRIPTION: MIL-C-26482 SERIES 1 & MS3114, NO
FACE SEAL, NORMAL POSITION

PART NO.: 3210-XXXX
GSP SERIES NO.: BE7 SERIES CONNECTORS
GENERAL DESCRIPTION: MIL-C-26482 SERIES 1 & MS3114, NO
FACE SEAL, W POSITION

PART NO.: 3220-XXXX
GSP SERIES NO.: BE7 SERIES CONNECTORS
GENERAL DESCRIPTION: MIL-C-26482 SERIES 1 & MS3114, NO
FACE SEAL, X POSITION

PART NO.: 3230-XXXX
GSP SERIES NO.: BE7 SERIES CONNECTORS
GENERAL DESCRIPTION: MIL-C-26482 SERIES 1 & MS3114, NO
FACE SEAL, Y POSITION

PART NO.: 3240-XXXX
GSP SERIES NO.: BE7 SERIES CONNECTORS
GENERAL DESCRIPTION: MIL-C-26482 SERIES 1 & MS3114, NO
FACE SEAL, Z POSITION



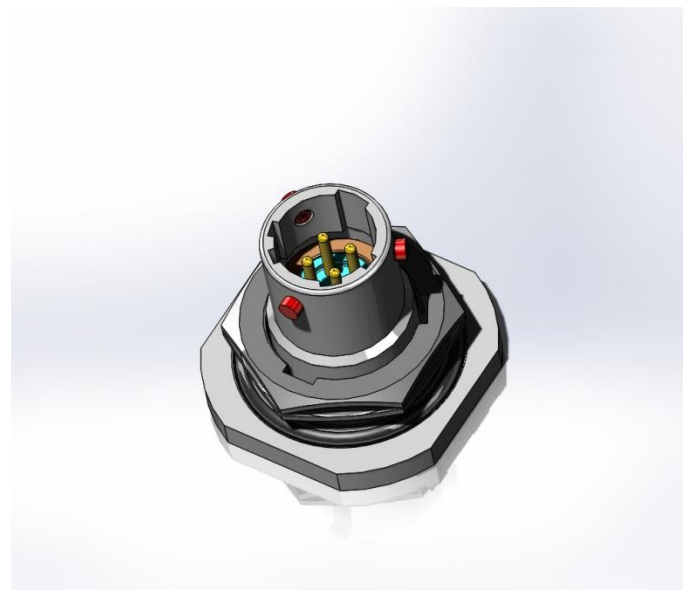
PART NO.: 3201-XXXX
GSP SERIES NO.: GB7 SERIES CONNECTORS
GENERAL DESCRIPTION: MIL-C-26482 SERIES 1 & MS3114,
NORMAL POSITION

PART NO.: 3211-XXXX
GSP SERIES NO.: GB7 SERIES CONNECTORS
GENERAL DESCRIPTION: MIL-C-26482 SERIES 1 & MS3114,
W POSITION

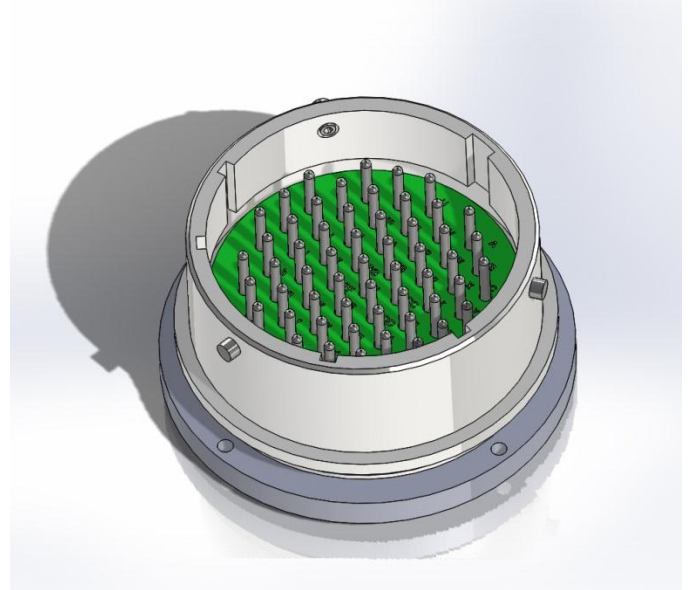
PART NO.: 3221-XXXX
GSP SERIES NO.: GB7 SERIES CONNECTORS
GENERAL DESCRIPTION: MIL-C-26482 SERIES 1 & MS3114,
X POSITION

PART NO.: 3231-XXXX
GSP SERIES NO.: GB7 SERIES CONNECTORS
GENERAL DESCRIPTION: MIL-C-26482 SERIES 1 & MS3114,
Y POSITION

PART NO.: 3241-XXXX
GSP SERIES NO.: GB7 SERIES CONNECTORS
GENERAL DESCRIPTION: MIL-C-26482 SERIES 1 & MS3114,
Z POSITION



PART NO.: 3300-XXXX
GSP SERIES NO.: SPECIAL CONNECTORS
GENERAL DESCRIPTION: MIL-C-26482



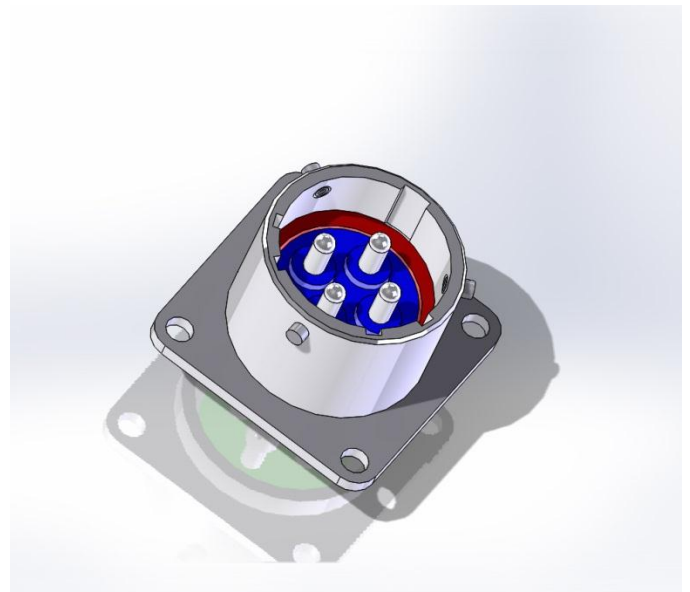
PART NO.: 3440-0XXX
GSP SERIES NO.: 440 SERIES CONNECTORS
GENERAL DESCRIPTION: MIL-C-26482 SERIES 2 & MS3440,
NORMAL POSITION

PART NO.: 3440-1XXX
GSP SERIES NO.: 440 SERIES CONNECTORS
GENERAL DESCRIPTION: MIL-C-26482 SERIES 2 & MS3440, X
POSITION

PART NO.: 3440-2XXX
GSP SERIES NO.: 440 SERIES CONNECTORS
GENERAL DESCRIPTION: MIL-C-26482 SERIES 2 & MS3440, X
POSITION

PART NO.: 3440-3XXX
GSP SERIES NO.: 440 SERIES CONNECTORS
GENERAL DESCRIPTION: MIL-C-26482 SERIES 2 & MS3440, Y
POSITION

PART NO.: 3440-4XXX
GSP SERIES NO.: 440 SERIES CONNECTORS
GENERAL DESCRIPTION: MIL-C-26482 SERIES 2 & MS3440, Z
POSITION



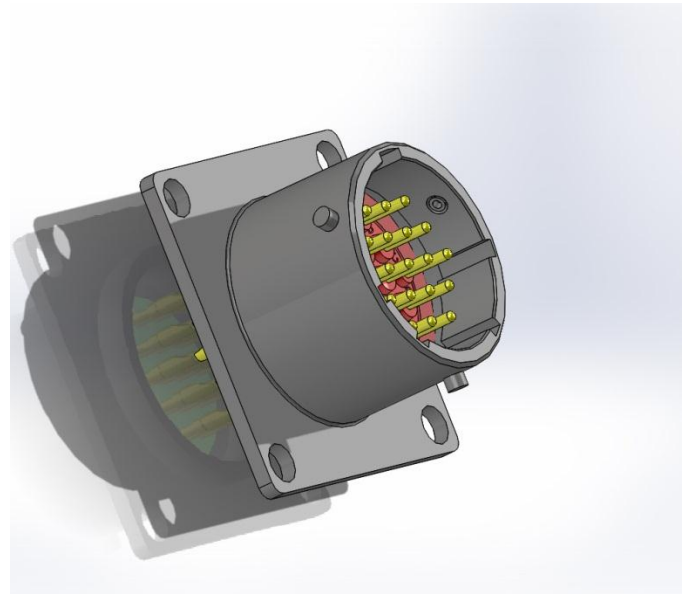
PART NO.: 3442-0XXX
GSP SERIES NO.: 442 SERIES CONNECTORS
GENERAL DESCRIPTION: MIL-C-26482 SERIES 2 & MS3440,
NORMAL POSITION

PART NO.: 3442-1XXX
GSP SERIES NO.: 442 SERIES CONNECTORS
GENERAL DESCRIPTION: MIL-C-26482 SERIES 2 & MS3440, W
POSITION

PART NO.: 3442-2XXX
GSP SERIES NO.: 442 SERIES CONNECTORS
GENERAL DESCRIPTION: MIL-C-26482 SERIES 2 & MS3440, X
POSITION

PART NO.: 3442-3XXX
GSP SERIES NO.: 442 SERIES CONNECTORS
GENERAL DESCRIPTION: MIL-C-26482 SERIES 2 & MS3440, Y
POSITION

PART NO.: 3442-4XXX
GSP SERIES NO.: 442 SERIES CONNECTORS
GENERAL DESCRIPTION: MIL-C-26482 SERIES 2 & MS3440, Z
POSITION



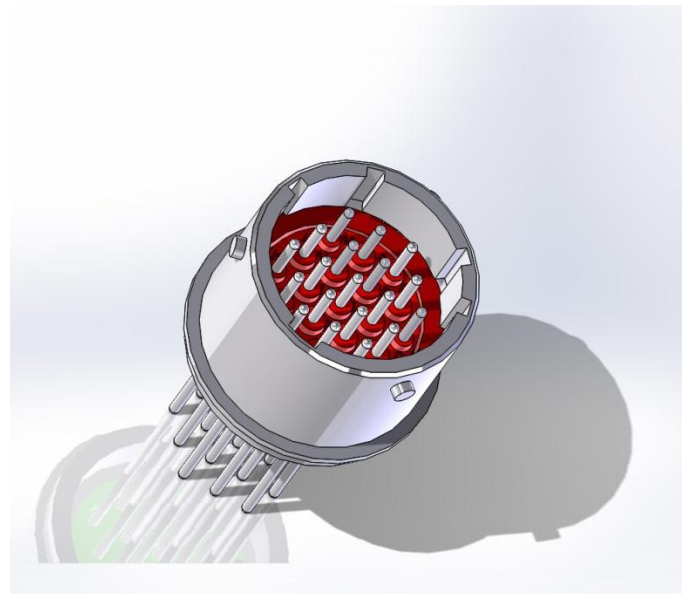
PART NO.: 3443-0XXX
GSP SERIES NO.: 443 SERIES CONNECTORS
GENERAL DESCRIPTION: MIL-C-26482 SERIES 2 & MS3440,
NORMAL POSITION

PART NO.: 3443-1XXX
GSP SERIES NO.: 443 SERIES CONNECTORS
GENERAL DESCRIPTION: MIL-C-26482 SERIES 2 & MS3440, W
POSITION

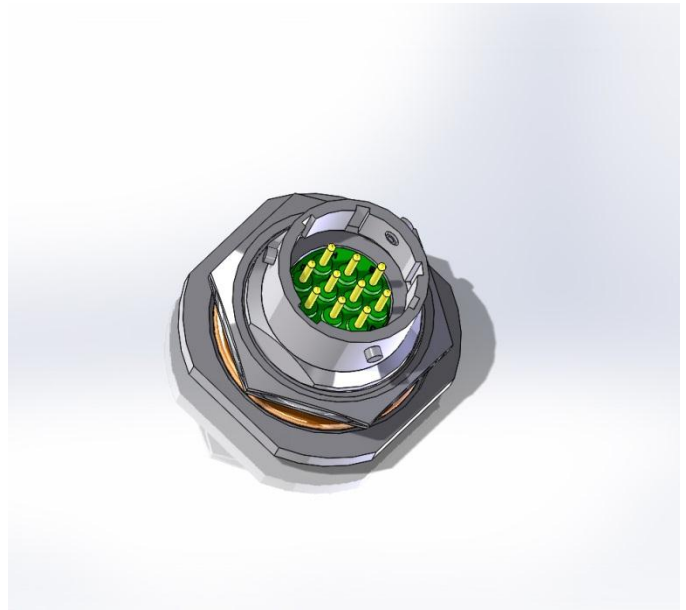
PART NO.: 3443-2XXX
GSP SERIES NO.: 443 SERIES CONNECTORS
GENERAL DESCRIPTION: MIL-C-26482 SERIES 2 & MS3440, X
POSITION

PART NO.: 3443-3XXX
GSP SERIES NO.: 443 SERIES CONNECTORS
GENERAL DESCRIPTION: MIL-C-26482 SERIES 2 & MS3440, Y
POSITION

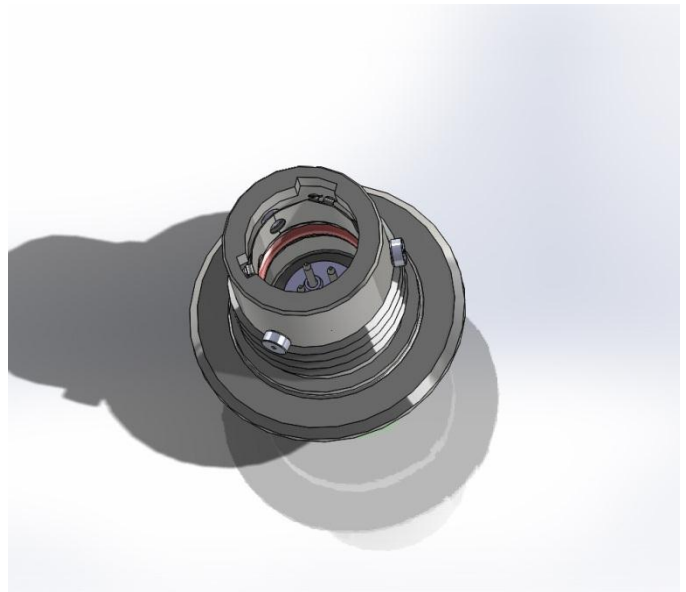
PART NO.: 3443-4XXX
GSP SERIES NO.: 443 SERIES CONNECTORS
GENERAL DESCRIPTION: MIL-C-26482 SERIES 2 & MS3440, Z
POSITION



PART NO.: 3449-0XXX
GSP SERIES NO.: 449 SERIES CONNECTORS
GENERAL DESCRIPTION: MIL-C-26482 SERIES 2 & MS3440,
NORMAL POSITION
PART NO.: 3449-1XXX
GSP SERIES NO.: 449 SERIES CONNECTORS
GENERAL DESCRIPTION: MIL-C-26482 SERIES 2 & MS3440, W
POSITION
PART NO.: 3449-2XXX
GSP SERIES NO.: 449 SERIES CONNECTORS
GENERAL DESCRIPTION: MIL-C-26482 SERIES 2 & MS3440, X
POSITION
PART NO.: 3449-3XXX
GSP SERIES NO.: 449 SERIES CONNECTORS
GENERAL DESCRIPTION: MIL-C-26482 SERIES 2 & MS3440, Y
POSITION
PART NO.: 3449-4XXX
GSP SERIES NO.: 449 SERIES CONNECTORS
GENERAL DESCRIPTION: MIL-C-26482 SERIES 2 & MS3440, Z
POSITION



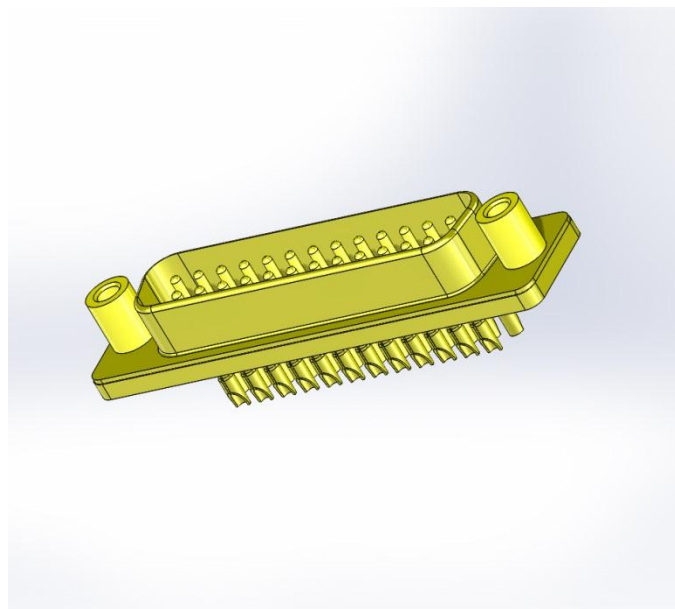
PART NO.: 3480-XXXX
GSP SERIES NO.: 3480 SERIES CONNECTORS
GENERAL DESCRIPTION: AMPHENOL'S 3480 SERIES



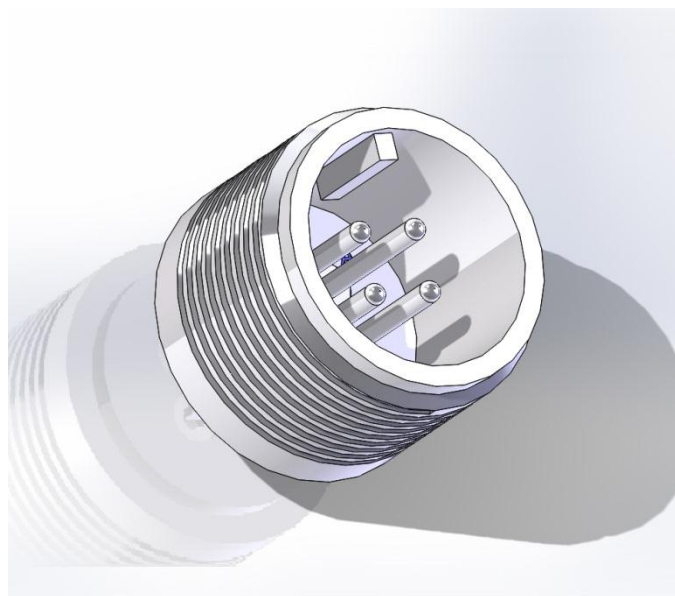
PART NO.: 3700-XXXX
GSP SERIES NO.: 723 SERIES CONNECTORS
GENERAL DESCRIPTION: MIL-C-83723 SERIES 3



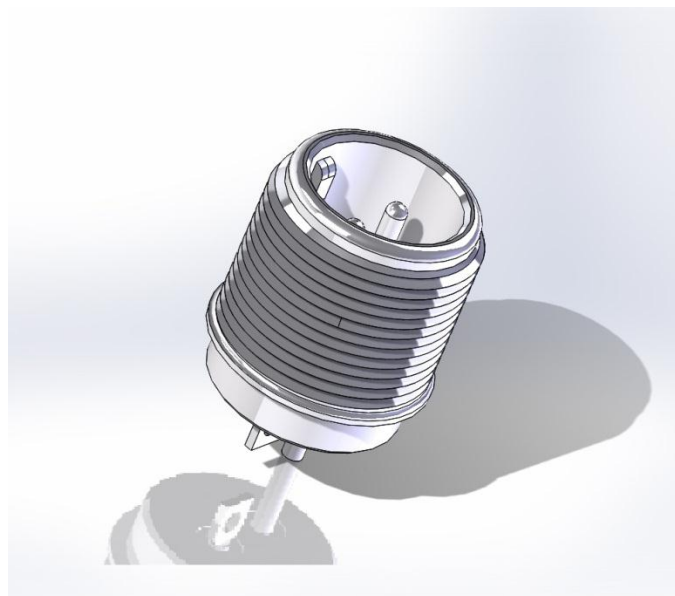
PART NO.: 5000-XXXX
GSP SERIES NO.: DH SERIES CONNECTORS
GENERAL DESCRIPTION: MIL-C-24308



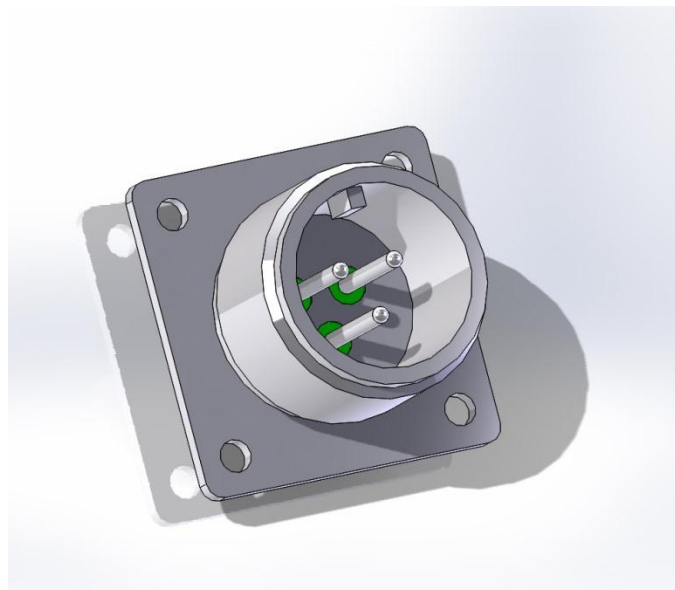
PART NO.: 5100-XXXX
GSP SERIES NO.: GSP2 SERIES CONNECTORS
GENERAL DESCRIPTION: MIL-C-5015, INDIVIDUAL GLASS, NO
FLANGE



PART NO.: 5200-XXXX
GSP SERIES NO.: GSP2 SERIES CONNECTORS
GENERAL DESCRIPTION: MIL-C-5015, INDIVIDUAL GLASS,
ROUND FLANGE



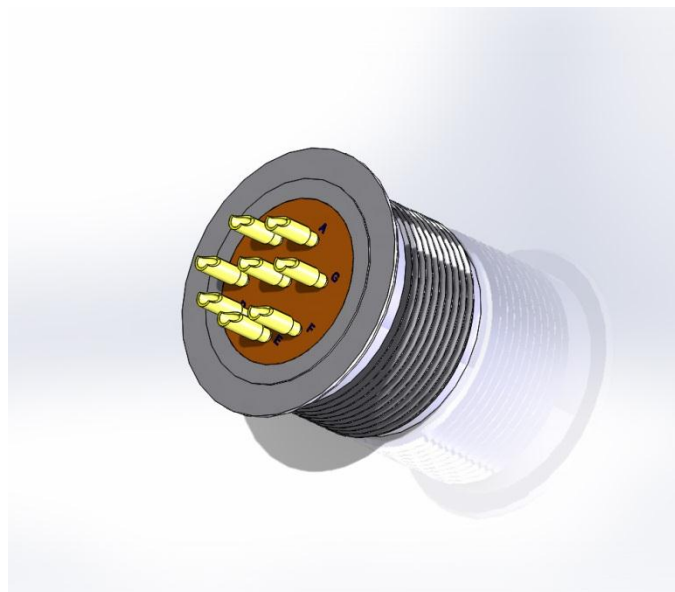
PART NO.: 5300-XXXX
GSP SERIES NO.: GSP2 SERIES CONNECTORS
GENERAL DESCRIPTION: MIL-C-5015, INDIVIDUAL GLASS,
SQUARE FLANGE



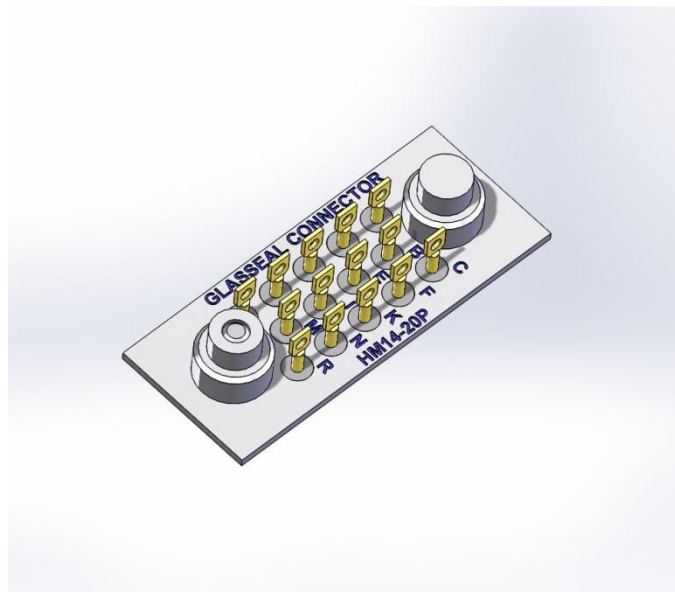
PART NO.: 5302-XXXX
GSP SERIES NO.: GSP2 SERIES CONNECTORS
GENERAL DESCRIPTION: MIL-C-5015, INDIVIDUAL GLASS, HEX
FLANGE



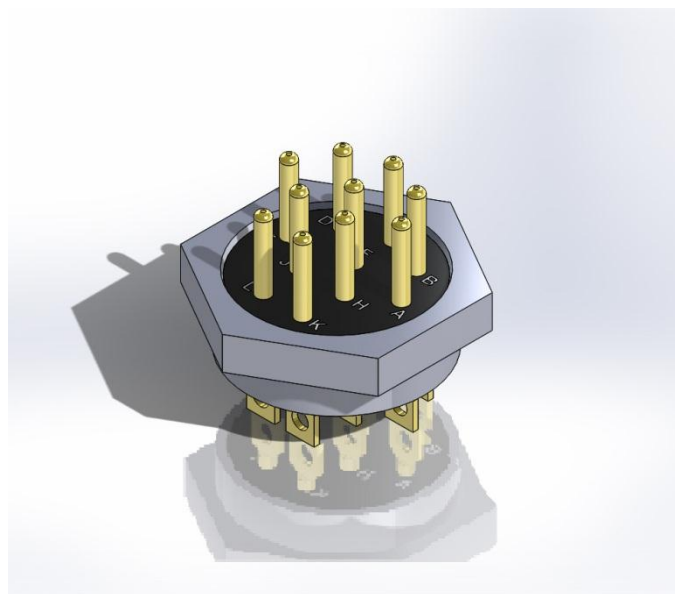
PART NO.: 5400-XXXX
GSP SERIES NO.: GSP2 SERIES CONNECTORS
GENERAL DESCRIPTION: MIL-C-5015, INDIVIDUAL ALL GLASS
CONSTRUCTION



PART NO.: 5500-XXXX
GSP SERIES NO.: HM SERIES CONNECTORS
GENERAL DESCRIPTION: MIL-C-28748, MINIATURE SERIES

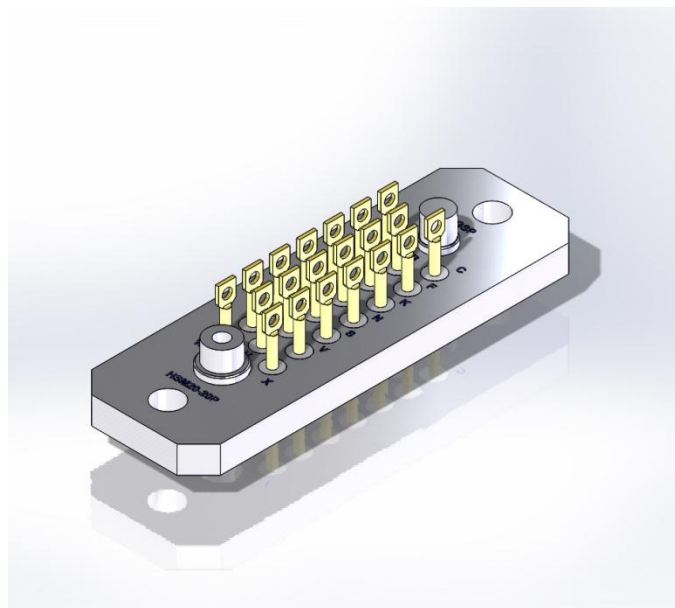


PART NO.: 5501-XXXX
GSP SERIES NO.: HC SERIES CONNECTORS
GENERAL DESCRIPTION: MIL-C-8384



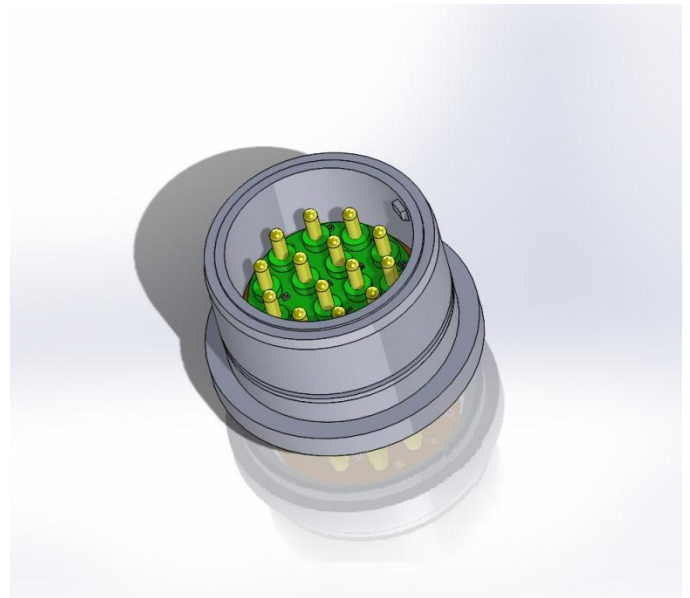
PART NO.: 5502-XXXX
GSP SERIES NO.: HMRA SERIES CONNECTORS
GENERAL DESCRIPTION: SAME AS HM SERIES WITH REVERSE FLANGE

PART NO.: 6500-XXXX
GSP SERIES NO.: HSM SERIES CONNECTORS
GENERAL DESCRIPTION: MIL-C-28748 SUB-MINIATURE SERIES

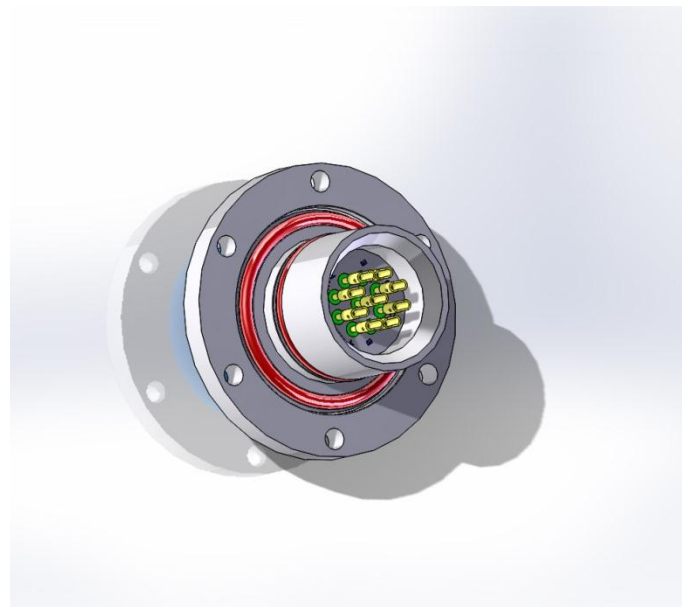


PART NO.: 6501-XXXX
GSP SERIES NO.: RHSM SERIES CONNECTORS
GENERAL DESCRIPTION: SAME AS HM SERIES WITH REVERSE FLANGE

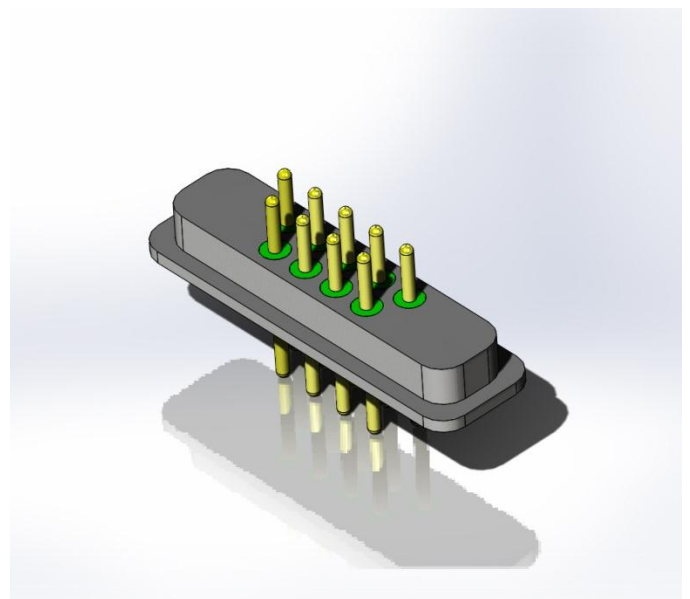
PART NO.: 6700-XXXX
GSP SERIES NO.: 6700 SERIES CONNECTORS
GENERAL DESCRIPTION: AMPHENOL'S 6700 SERIES



PART NO.: 7000-XXXX
GSP SERIES NO.: 7000 SERIES CONNECTORS
GENERAL DESCRIPTION: MIL-C-24217 CONNECTORS



PART NO.: 7500-XXXX
GSP SERIES NO.: HMM SERIES CONNECTORS
GENERAL DESCRIPTION: MIL-C-28748 MICRO-MINIATURE
SERIES



PART NO.: 7500-XXXX
GSP SERIES NO.: HMM SERIES CONNECTORS
GENERAL DESCRIPTION: SAME AS HMM SERIES WITH
REVERSE FLANGE